



Goodrich Global
SINCE 1983

Relaxing Floors

restD | childD | mellowD

A PATH TO STRESS REDUCTION



Fractal Vision



Seemingly random shapes and forms found in nature often appear haphazard. But upon closer inspection, there is a structure underlying these natural arrangements. And as we look closer and closer, the patterns repeat over and over. These are fractals.

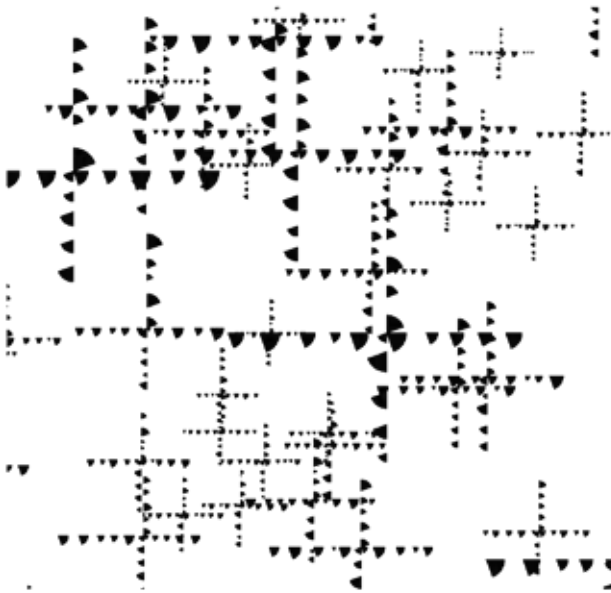
When we look at a tree, first we see big branches growing out of the trunk, then we see smaller branches growing out of each big branch. As we keep zooming in, finer and finer branches appear, all the way down to the smallest twigs.

In basing design on the stress-reductive quality found in fractals, the transdisciplinary team of 13&9 Design, Fractals Research, and Mohawk Group are tapping into our deep-seated desire to see patterns, to connect to nature and to have more inspiring and relaxing environments in which to live and work.

“Experiments show that people’s stress levels reduce by as much as 60% when looking at fractals.”

child

The second style within the 12" x 36" carpet plank collection, *child*, incorporates patterns using a computerized growth process to design fractals that reduce stress, as discovered during scientific studies. The plank visual is grounded by triangular segment-shaped seeds.





mellow**D**

mellowD is one of two styles within the 12" x 36" carpet plank collection that mimic eye movements that occur as we view a natural landscape. Style *mellowD* utilizes a line-shaped seed which repeats at different magnifications.



restD

Neurons are the electrical wires of the human body. They carry the signals that allow us to see, feel and move.

Through sophisticated imaging techniques, we can visualize these microscopic conductors. It is these images that form the basis for the Relaxing Floors *restD* plank style and a coordinating *Connecting Neurons Definity* broadloom style.

Under a microscope, these neurons look like miniature trees with fractal branches and glow red due to a fluorescent dye.

Starting from a high-resolution neuron image, the designers selected an area with a pleasing pattern, a balanced spread of neurons and good properties for a seamless pattern match. The neuron formations were then reduced to their outlines to create a literal visualization of the fractals that exist in our own bodies.



Specifications

Relaxing Floors

chillD | mellowD | restD

DESIGN

Yarn	Duracolor® Tricor Premium Nylon
Construction	Tufted Textured Patterned Multi-Colored Loop
Dye Method	Solution Dyed
Gauge	1/12"
Stitches/Inch	9.5/Inch
Pile Height	2.23mm+/-0.5mm
Total Height	7.21mm+/-0.5mm
Pile Weight	22 oz/sy (746gm/m ²)
Total Weight	141 oz/sy (4800+-200gm/m ²)
Primary Backing	Non-woven
Secondary Backing	EcoFlex
Size	12"x36" (0.3048x0.9144m)
Packing	10 pcs (2.787m ²)/box
Stain Release Technology	Permanent, Built into Fiber
Soil Release Technology	EcoSentry Soil Protection

PERFORMANCE

Colorfastness	Grade 5 = No Change (AATCC 16)
Flammability	Class 1 (ASTM E648)
Smoke Density	Passed (ASTM E662 Less than 450)
Static Propensity	≤ 3.5 kV (AATCC-134)

SUSTAINABILITY

CRI Green Label Plus	GLP1171
NSF 140	NSF 140 Gold
SGBC	LEADER

SERVICE

Warranties	Lifetime Limited Carpet Tile Warranty, Lifetime Limited Duracolor Stain Warranty, Lifetime Static
------------	---

INSTALLATION METHODS





Permanent Protection

*Resists 99% of all common stains

**Made with a minimum of
30% recycled content**

(25% Pre-consumer & 5% Post-consumer)

No Chemicals
Stains are removed
with just water



Traditional Nylon
Fibers have a positive charge that attracts the 99% of common stains that are negatively charged, causing many permanent stains to occur.



Duracolor Fibers have a negative charge that actually repel 99% of negatively charged, common staining substances.

**Stain Free
Sustainable
Beautiful**

FOREVER

The U.S. federal government's rigorous test for carpet stain resistance is called AATCC Test Method 175. Unlike topical protective treatments that wear off over time, Duracolor passes this third-party certified test with flying colors.

AATCC TEST METHOD 175



Samples of Duracolor and a competitor's carpet are put through 100 revolutions of the Taber Abrader, which is used to simulate years of foot traffic.



A portion of each sample is stained with Red Dye #40.



Samples of Duracolor and a competitor's carpet are put through 100 revolutions of the Taber Abrader, which is used to simulate years of foot traffic.



The samples are then rated against the government's AATCC Red Dye #40 10-point scale.

THE RESULTS: Duracolor delivers superior stain resistance despite the simulation of heavy foot traffic.



DURACOLOR
scores 8.0+ on the
10-point scale

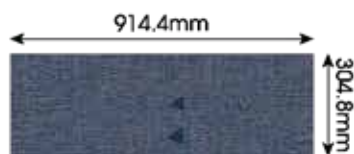
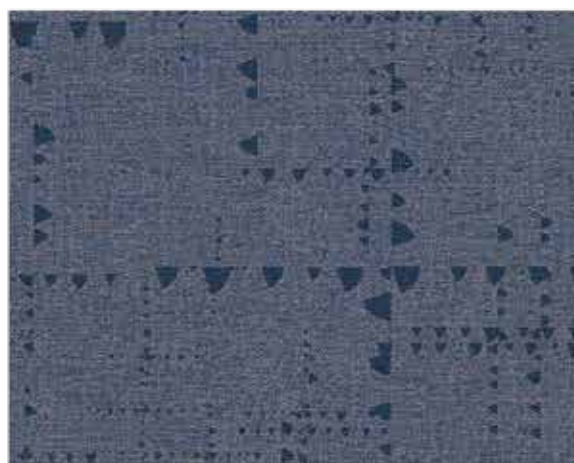
Duracolor passes this test because its stain protection is an inherent property that cannot wash off or wear away. It does not use topical treatment.

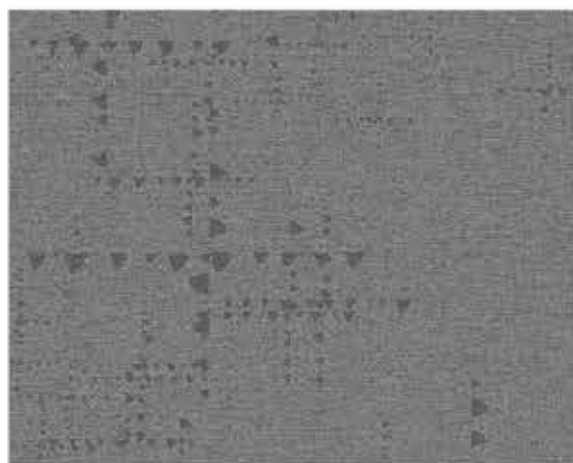
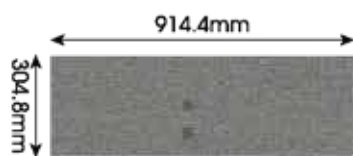


Competitor topicals
wear off causing
them to fail



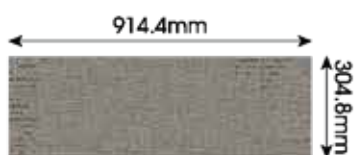
CD965 Navy

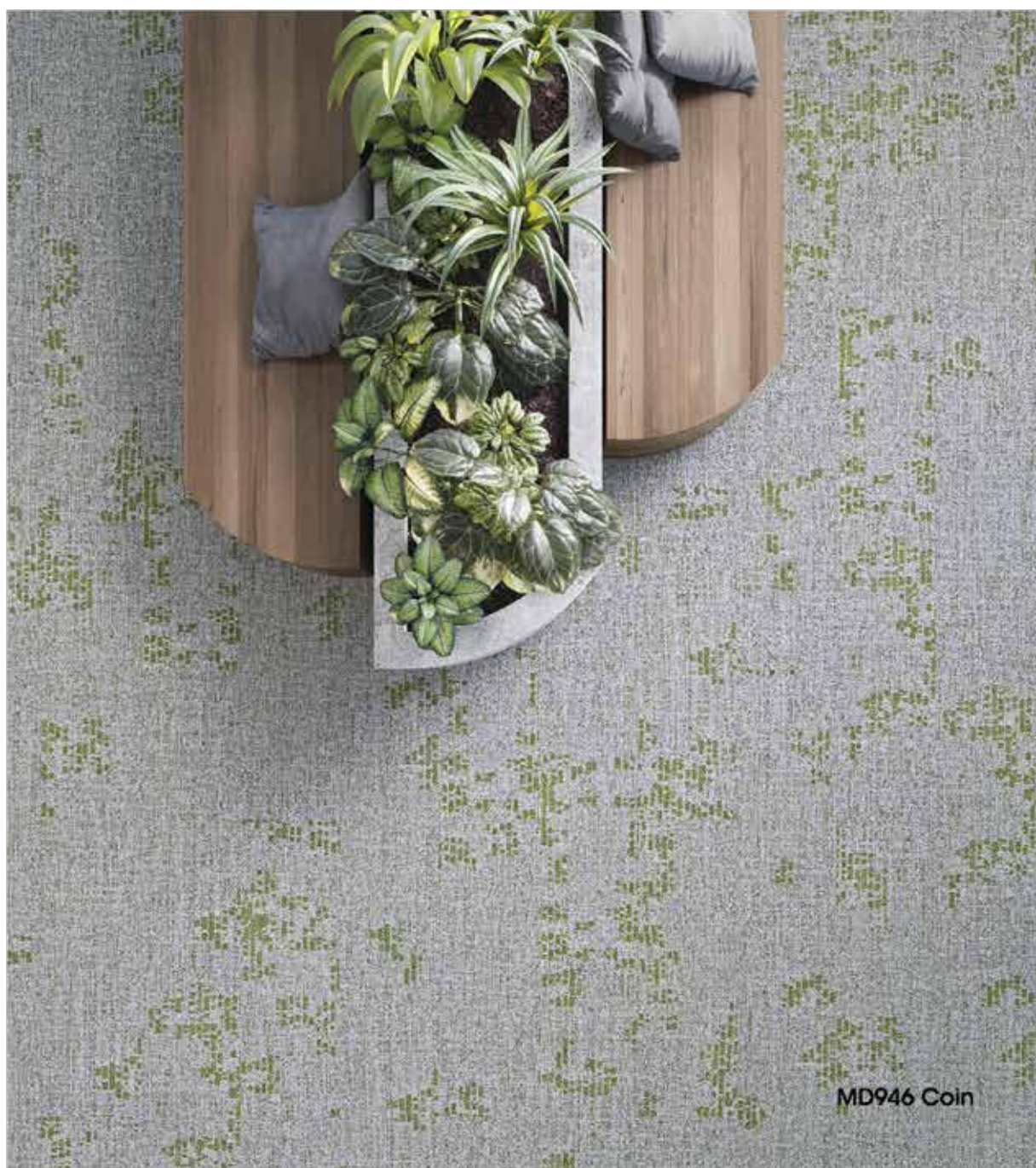
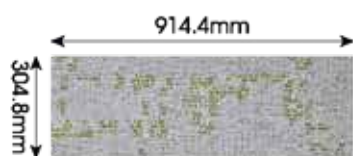






MD829 Fossil





MD946 Coin





CD949 Carbon

