

DIAMOND 10™ Coated Homogeneous Sheet

ColorArt™ MEDINTONE™



Core Technology



Tough as Diamond

- Unique formulation with industrial diamond
- More compacted and tougher coating to protect the vinyl flooring



Easy to Clean

- Water/oil-based pollutants are difficult to penetrate into flooring
- More economic and quicker cleaning maintenance



More Durable

- Superb anti-scratching capability
- Double the average coating thickness of competitors
- Excellent user experience in durability



Anti-Chemical

- Prevent kinds of medicament and strong acid/alkali from damage to flooring
- Tolerate to daily repeated detergent treatment

Why Choose Medintone?

Problem-free Installation

Installs quickly with no special tools or techniques required and is easy to heat weld and flash cove for spaces that demand a seamless surface for infection control.

As a finishing touch, Armstrong Flooring offers a selection of solid and patterned weld rod colors to coordinate or contrast with the floor to fulfill your design intent. Patterned weld rods are color matched to our flooring selections and add design dimension to any installation.

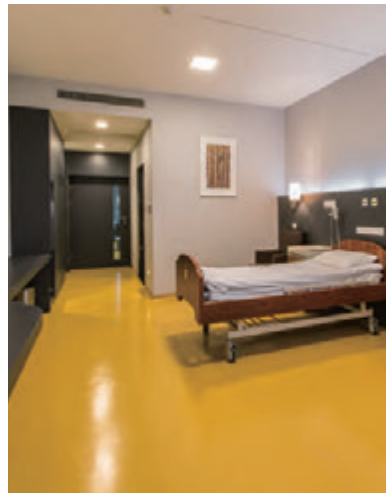
Eco-Friendly Partner

Armstrong Flooring is committed to sustainable built environments in all that we do, by providing sustainable product attributes that contribute to credits for Green Building Rating Systems such as the Collaborative for High Performance Schools® (CHPS®), WELL Building Standard® , Leadership in Energy and Environmental Design (LEED®), and Green Globes® . Our floors also meet the requirements for the California Building Code (CALGreen®) and the International Green Construction Code (IgCC).

As Armstrong's commercial PVC sheet product with the most abundant colors, Medintone has always been favored by designers and widely used in projects around the world. Along with the release of the Diamond 10™ technology, Medintone is gorgeously regenerated with

47

new colors, redefining your design with colors.



Technical Data

Characteristics	Standard	Unit	Result
Type of flooring	ISO 10581-EN 649		Homogeneous Sheet
Material			Polyvinyl chloride
Coating			DIAMOND 10™
Safety criteria			
DEHP/DNOP	EN 14372		ND
Flammability	EN 13501-1	class	Bf1
Slip resistance	DIN 51130	group	R9
Dynamic coefficient of friction	EN 13893	class	DS
Bacteria resistance	ISO 846: Part C		No observed growth
Performance behaviour			
Sheet width	ISO 24341-EN 426	m	2
Sheet length	ISO 24341-EN 426	m	17-23
Overall thickness	ISO 24346-EN 428	mm	2.0
Total weight	ISO 23997-EN 430	kg/m ²	2.75
Wear resistance	EN 649	group	T
Binder content	EN ISO 10581	Type	Type1
Residual indentation	ISO 24343-1-EN 433	mm	0.03
Dimensional Stability	ISO 23999-EN 434		X:<0.4% Y:<0.4%
Color fastness	ISO 105-B02	rating	>=6
Resistance to staining	EN 423		No Stain 0
Classification			
Domestic	ISO 10874-EN 685	class	23 heavy duty
Commercial	ISO 10874-EN 685	class	34 very heavy duty
Industrial	ISO 10874-EN 685	class	43 heavy duty
Additional property			

Goodrich Global | Goodrich Building, 8 Changi South Lane, #05-01, Singapore 486113
 T - (65) 6787 8787 | F - (65) 6788 7733
 Opening Hrs - M to F 9am to 6pm

Stay Connected - www.goodrichglobal.com | info@goodrichglobal.com

[/Goodrich.Gallery.Singapore](https://www.facebook.com/Goodrich.Gallery.Singapore)

[/goodrich_global](https://www.instagram.com/goodrich_global)

[/GoodrichGlobal](https://www.linkedin.com/company/GoodrichGlobal)

[/GoodrichHQ](https://www.youtube.com/channel/UC...)

[/goodrich_global](https://www.instagram.com/goodrich_global)

[/GoodrichGlobal](https://www.linkedin.com/company/GoodrichGlobal)

[/GoodrichHQ](https://www.youtube.com/channel/UC...)

[/goodrich_global](https://www.instagram.com/goodrich_global)

[/GoodrichGlobal](https://www.linkedin.com/company/GoodrichGlobal)

[/GoodrichHQ](https://www.youtube.com/channel/UC...)

[/goodrich_global](https://www.instagram.com/goodrich_global)

[/GoodrichGlobal](https://www.linkedin.com/company/GoodrichGlobal)

[/goodrich_global](https://www.instagram.com/goodrich_global)

[/GoodrichHQ](https://www.youtube.com/channel/UC...)

[/goodrich_global](https://www.instagram.com/goodrich_global)

[/GoodrichGlobal](https://www.linkedin.com/company/GoodrichGlobal)

