

GOODRICH SOLUTIONS
WALLCOVERING
236 | **TOPAZ**



Goodrich Global
SINCE 1983

FABRIC BACKED VINYL TYPE II

PREMIERWALL



*We've got you
Covered!*

PREMIERWALL
2021 - 2024.12

COMMERCIAL | HOSPITALITY | RESIDENTIAL



PREMIERWALL TOPAZ

52 / 54" Fabric-Backed Contract Wallcovering

PHYSICAL PROPERTIES

Weight(avg) 20 oz. PLY / 620G/PLM

Roll Size 52/54" x 30yds

Backing Osnaburg / Non Woven

Meets or exceeds Federal Specification CCC-W-408D for Type II Wallcovering

FIRE SAFETY

- Class "A" fire rated - tested in accordance with ASTM E-84 Tunnel test
- Flame spread: 25 / Smoke developed: 45

CLEANING / MAINTENANCE

Metallic finishes can be discoloured with the use of caustic cleaners. Thus, we recommend only the use of a mild soap solution for cleaning these products. If stronger cleaning is required, first evaluate the cleaner in an inconspicuous location.

ANTI-MICROBIAL FEATURES

PREMIERWALL TOPAZ contains a mildew inhibiting agent that has been added to help protect against fungal and other microbiological growth. No additives however, will prevent mold growth if moisture is allowed to accumulate and its sources are not eliminated.

BATCHING

Since slight variation in shading may occur time to time, it is important that the roll carrying the same batch number be used in any one area.

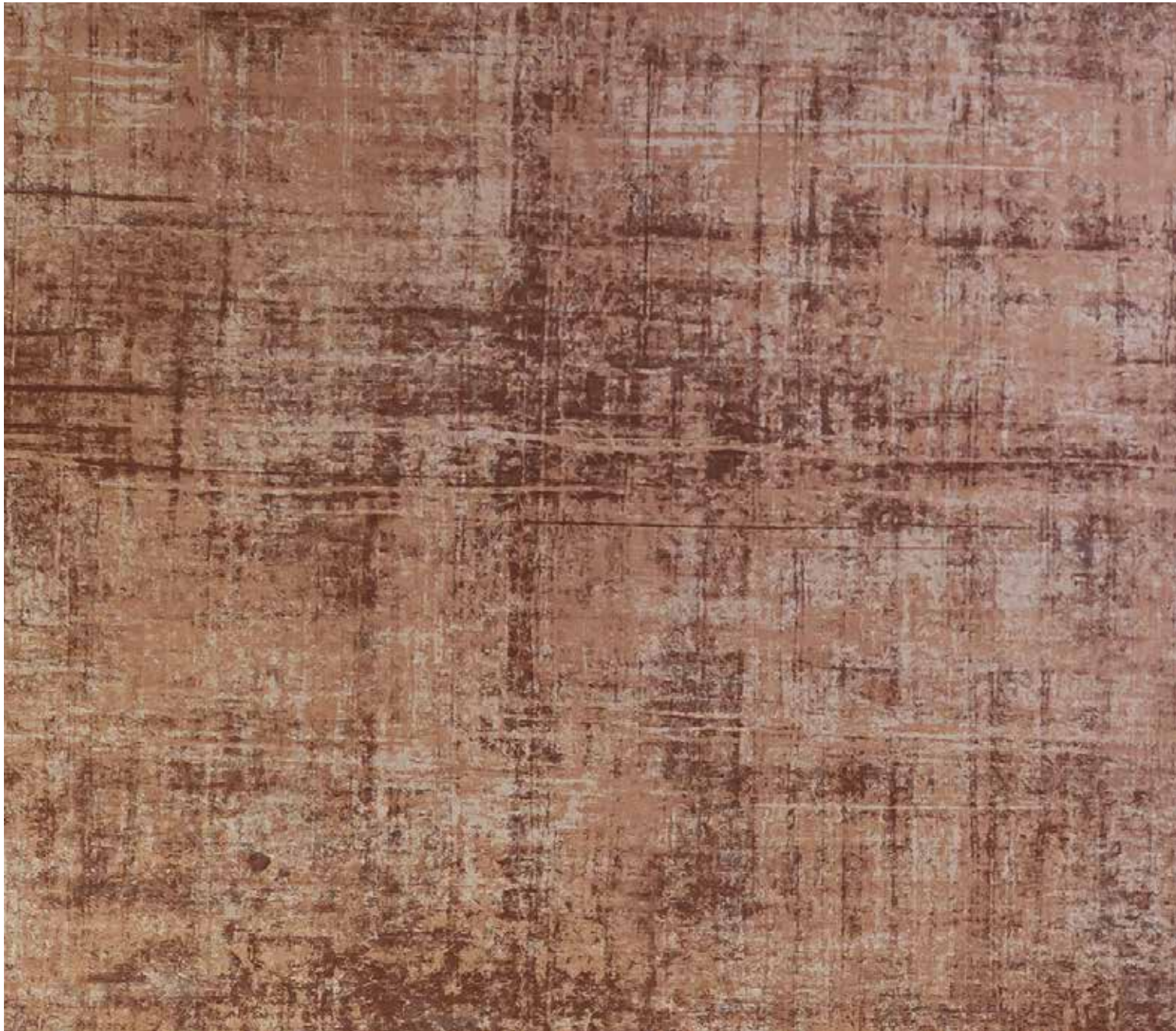
ORIGIN

USA

PWT1511 Bronzite,
PWT1516 River Walk



PWT0106 Sepia



SPECIFICATIONS & PROPERTIES

Weight: 20 oz/ly (452 gr/m2)
Width: 52/54" (132/137cm)
Backing: Non Woven
Installation: Reverse Hang / Random Match

Custom colors, weights, widths and microventing are available.

ENVIRONMENTAL & HEALTH

- State of Washington Building Specification for Indoor Air Quality
- California Section 01350 Indoor Air Quality Standard
- Phthalate Free
- Free of PBDE's (Brominated Flame Retardants)
- Environmental Product Declaration (EPD) Available
- Health Product Declaration (HPD) Available
- Aggressive manufacturing materials recovery and reuse program
- Highly cleanable water-based inks



PWT0101 Ivory



PWT0102 Zinc



PWT0103 Chrome



PWT0104 Parchment



PWT0105 Fallow



PWT0106 Sepia



PWT0107 Copper



PWT0107 Copper



PWT0108 Gold Luster



PWT0109 Turquoise



PWT0110 Silver Glint



PWT0111 Buff



PWT0112 Bronze



PWT0113 Stardust

PWT0205 Tungsten



SPECIFICATIONS & PROPERTIES

Weight: 20 oz/ly (452 gr/m2)
Width: 52/54" (132/137cm)
Backing: Non Woven
Installation: Straight Hang / Random Match

Custom colors, weights, widths and microventing are available.

ENVIRONMENTAL & HEALTH

- State of Washington Building Specification for Indoor Air Quality
- California Section 01350 Indoor Air Quality Standard
- Phthalate Free
- Free of PBDE's (Brominated Flame Retardants)
- Environmental Product Declaration (EPD) Available
- Health Product Declaration (HPD) Available
- Aggressive manufacturing materials recovery and reuse program
- Highly cleanable water-based inks



PWT0201 Corten



PWT0202 Buff



PWT0203 Amazonite



PWT0203 Amazonite



PWT0204 Abalone



PWT0207 Silver



PWT0206 Steel



PWT0205 Tungsten

TEMPLETON SATIN

PWT0308 River Rail



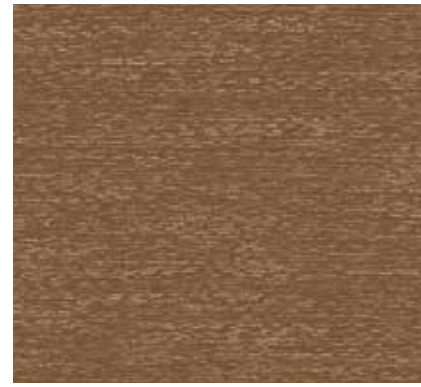
SPECIFICATIONS & PROPERTIES

Weight: 20 oz/ly (452 gr/m²)
Width: 52/54" (132/137cm)
Backing: Osnaburg
Installation: Reverse Hang / Random Match

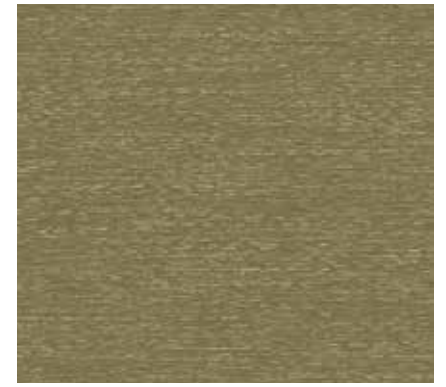
Custom colors, weights, widths and microventing are available.

ENVIRONMENTAL & HEALTH

- State of Washington Building Specification for Indoor Air Quality
- California Section 01350 Indoor Air Quality Standard
- Phthalate Free
- Free of PBDE's (Brominated Flame Retardants)
- Environmental Product Declaration (EPD) Available
- Health Product Declaration (HPD) Available
- Aggressive manufacturing materials recovery and reuse program
- Highly cleanable water-based inks



PWT0301 Derby Days



PWT0302 Clover



PWT0303 Cap's Quarters



PWT0304 Ideal White



PWT0305 Clean Slate



PWT0306 Milk Glass

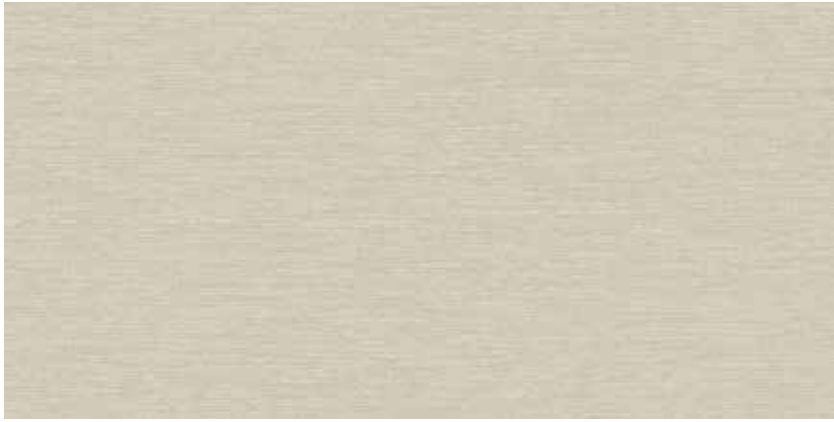


PWT0307 Silver Fern

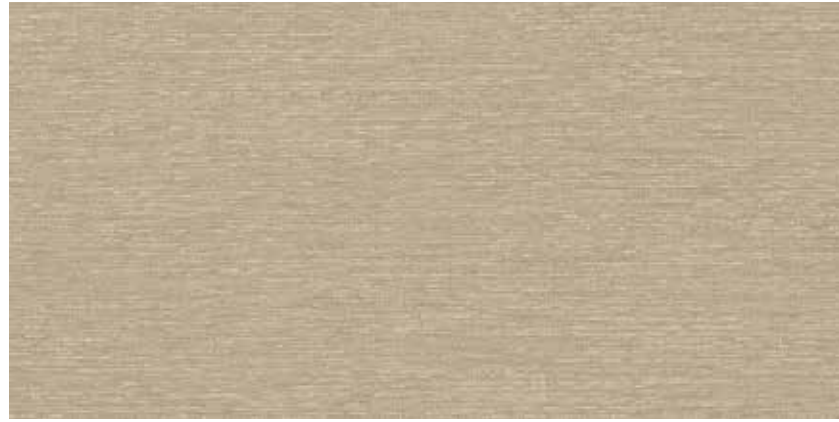


PWT0308 River Rail

PWT0319 Nocturnal



PWT0309 Sandpearl



PWT0315 Scribbly Gum



PWT0310 Natural



PWT0311 Beach Linen



PWT0316 Urban Nature



PWT0317 Basket Case



PWT0312 Ice House



PWT0318 Canyonland



PWT0313 Porchlights



PWT0314 Altitude



PWT0319 Nocturnal



PWT0320 Vintage Vibe

HEXAD TEXTURE

PWT0417 Morse Code



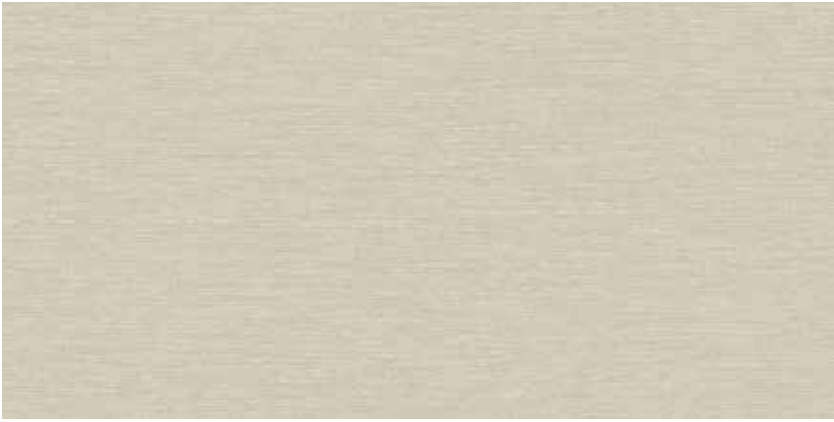
SPECIFICATIONS & PROPERTIES

Weight: 20 oz/ly (452 gr/m²)
Width: 52/54" (132/137cm)
Backing: Osnaburg
Installation: Reverse Hang / Random Match

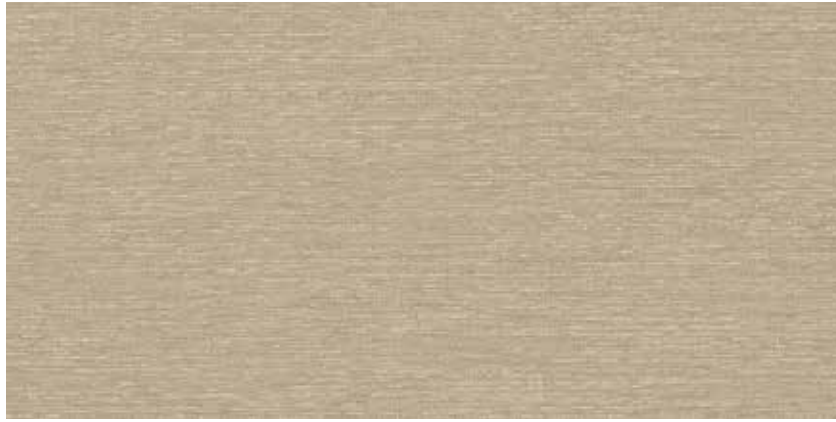
Custom colors, weights, widths and microventing are available.

ENVIRONMENTAL & HEALTH

- State of Washington Building Specification for Indoor Air Quality
- California Section 01350 Indoor Air Quality Standard
- Phthalate Free
- Free of PBDE's (Brominated Flame Retardants)
- Environmental Product Declaration (EPD) Available
- Health Product Declaration (HPD) Available
- Aggressive manufacturing materials recovery and reuse program
- Highly cleanable water-based inks



PWT0401 Polar



PWT0407 Zen



PWT0402 Unoaked



PWT0403 Silk Screen



PWT0408 Milestone



PWT0409 Bee Hive



PWT0404 Illuminaire



PWT0410 Topography



PWT0405 Latitude



PWT0406 Longitude



PWT0411 On The Rocks



PWT0412 Chainmail



PWT0402 UNOAKED



PWT0413 Midwest Pine



PWT0414 Seascape



PWT0415 Orbit



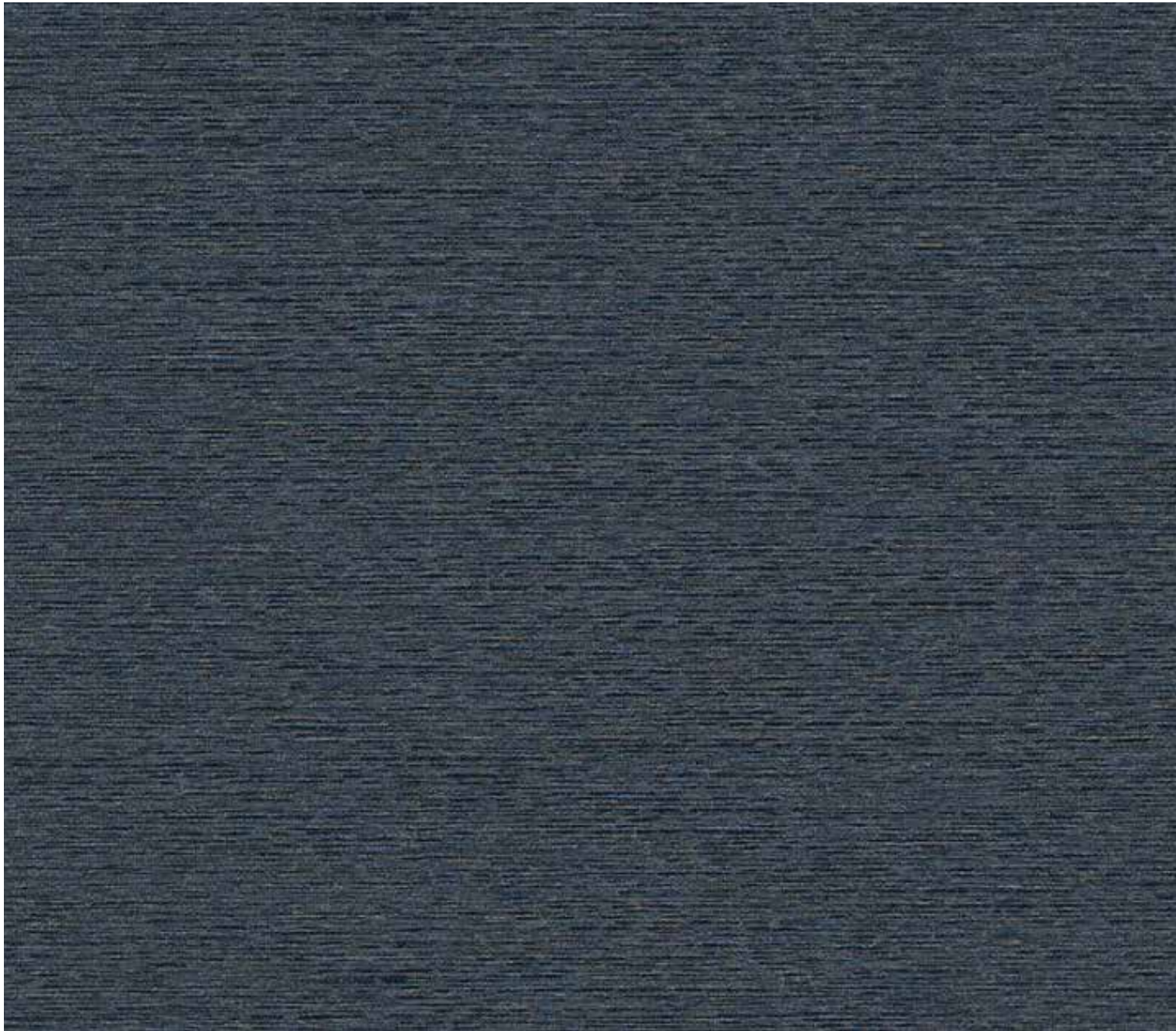
PWT0416 Concorde



PWT0417 Morse Code

TURRIN SILK

PWT0504 West Shore



SPECIFICATIONS & PROPERTIES

Weight: 20 oz/ly (452 gr/m2)
Width: 52/54" (132/137cm)
Backing: Osnaburg
Installation: Reverse Hang / Random Match

Custom colors, weights, widths and microventing are available.

ENVIRONMENTAL & HEALTH

- State of Washington Building Specification for Indoor Air Quality
- California Section 01350 Indoor Air Quality Standard
- Phthalate Free
- Free of PBDE's (Brominated Flame Retardants)
- Environmental Product Declaration (EPD) Available
- Health Product Declaration (HPD) Available
- Aggressive manufacturing materials recovery and reuse program
- Highly cleanable water-based inks



PWT0518 Weathervane



PWT0501 Bittersweet



PWT0502 Sundance



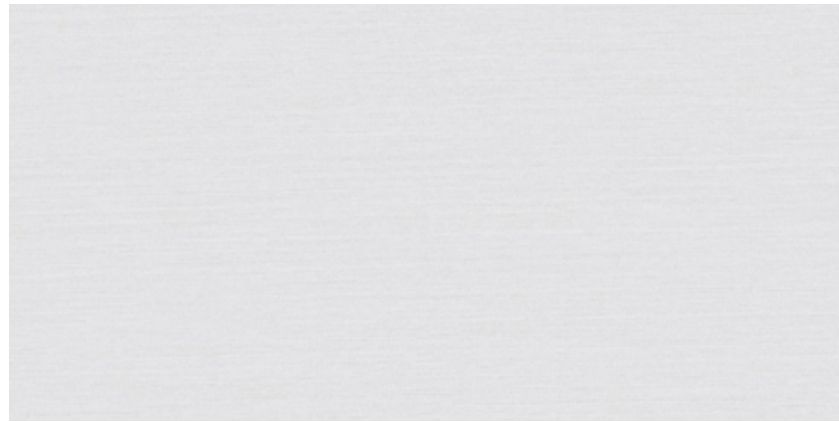
PWT0503 Palouse



PWT0504 West Shore



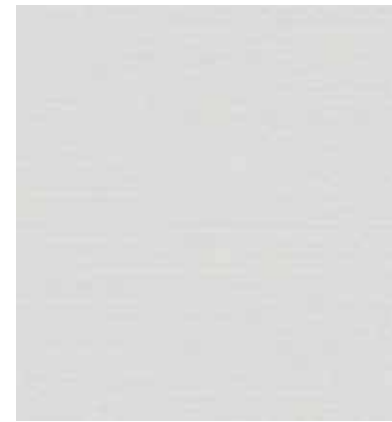
PWT0505 Picture Perfect



PWT0506 Iced Marble



PWT0507 Bisti



PWT0508 Hint of Grey



PWT0509 Social Light



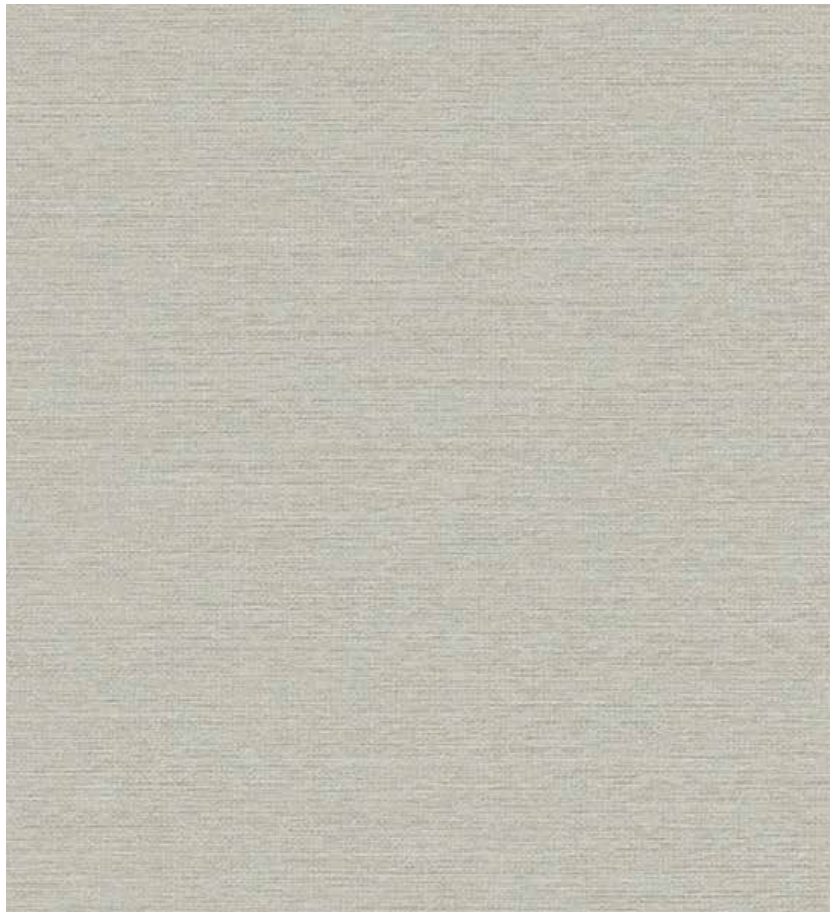
PWT0510 Naturally Neutral



PWT0511 Madeleine



PWT0512 Beach Ridge



PWT0513 Dense Fog



PWT0514 Craftsman



PWT0515 Cacao Nib



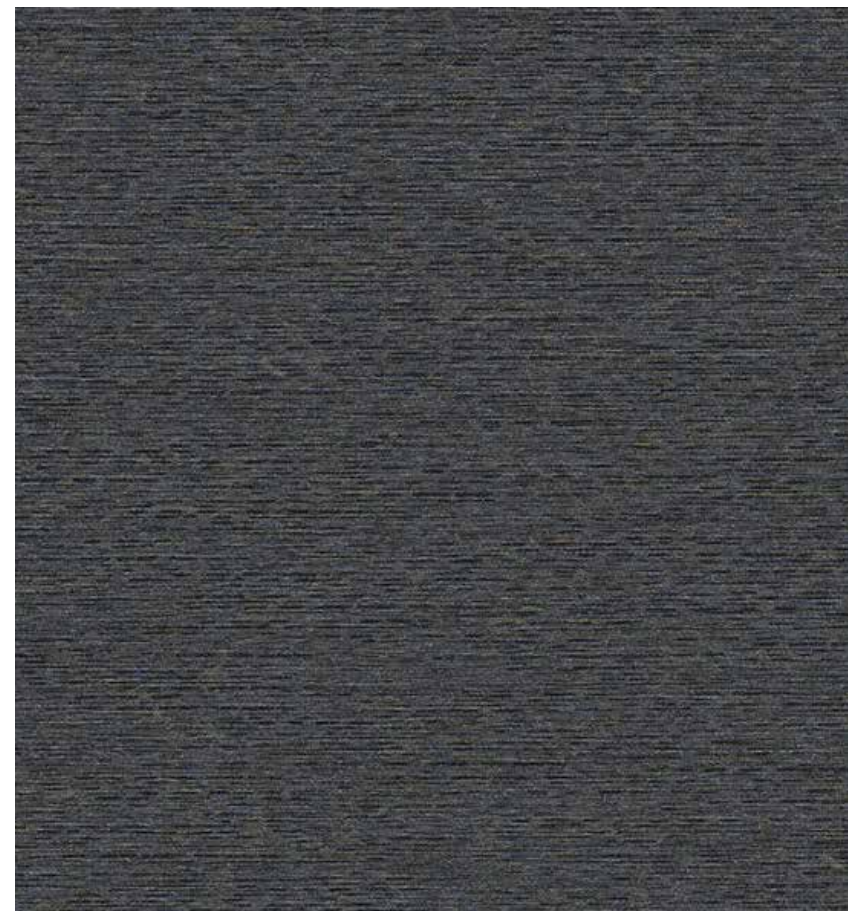
PWT0516 Sliver Screen



PWT0517 Light Rain

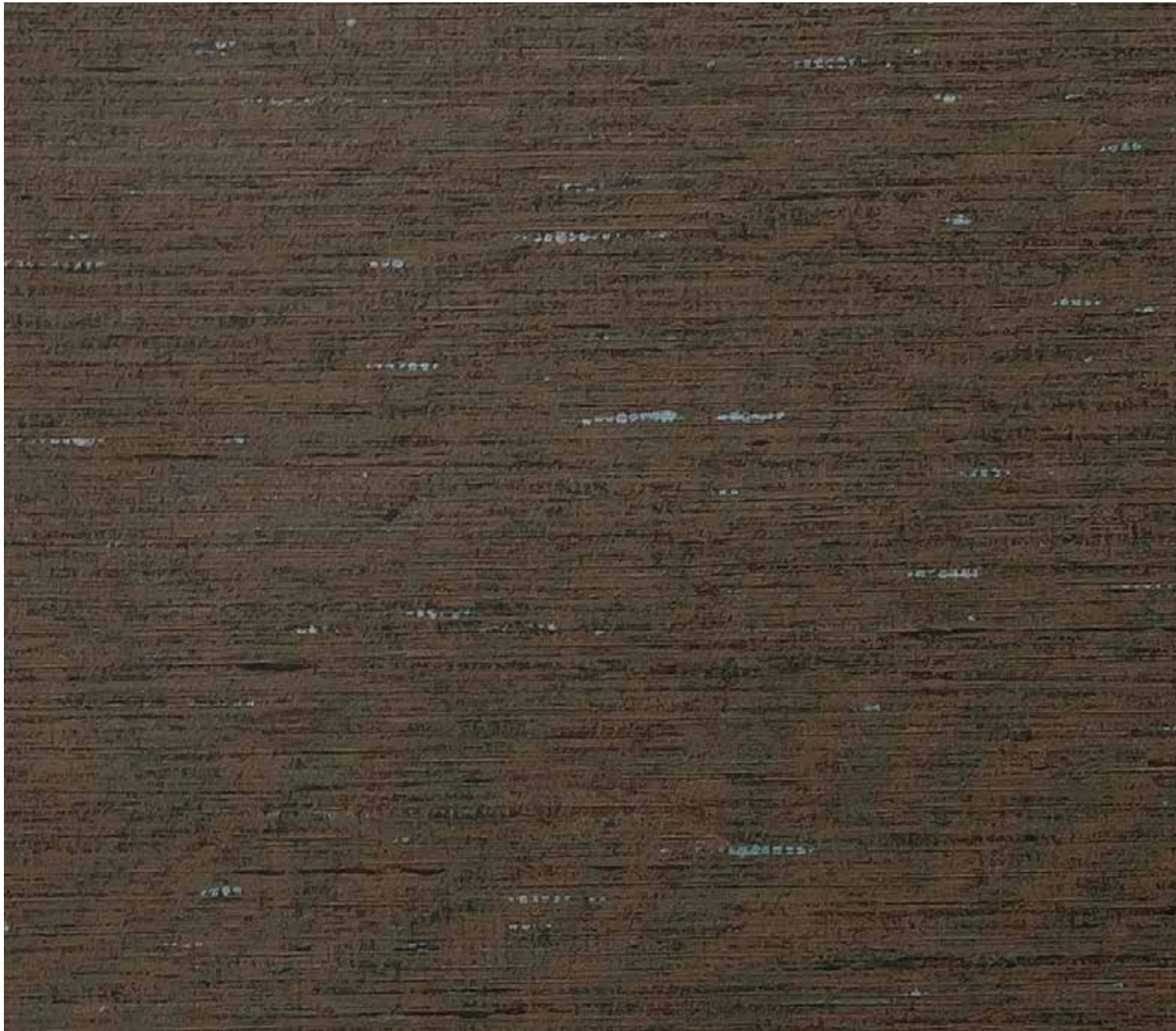


PWT0518 Weathervane



PWT0519 Checkmate

PWT0608 Oak



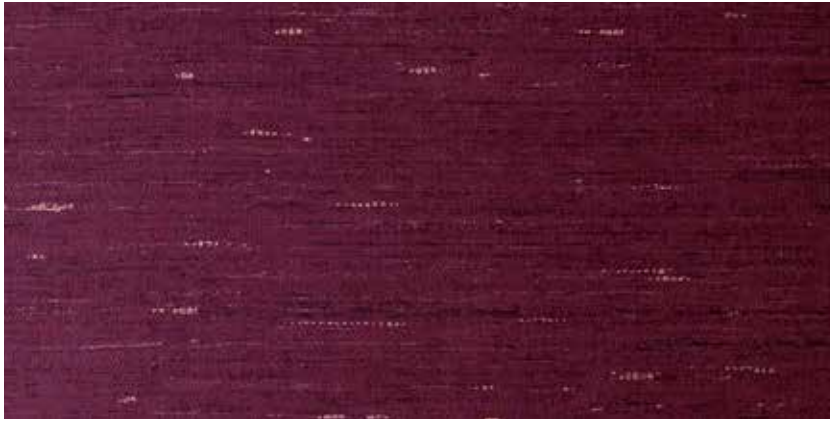
SPECIFICATIONS & PROPERTIES

Weight: 20 oz/ly (452 gr/m2)
Width: 52/54" (132/137cm)
Backing: Osnaburg
Installation: Reverse Hang / Random Match

Custom colors, weights, widths and microventing are available.

ENVIRONMENTAL & HEALTH

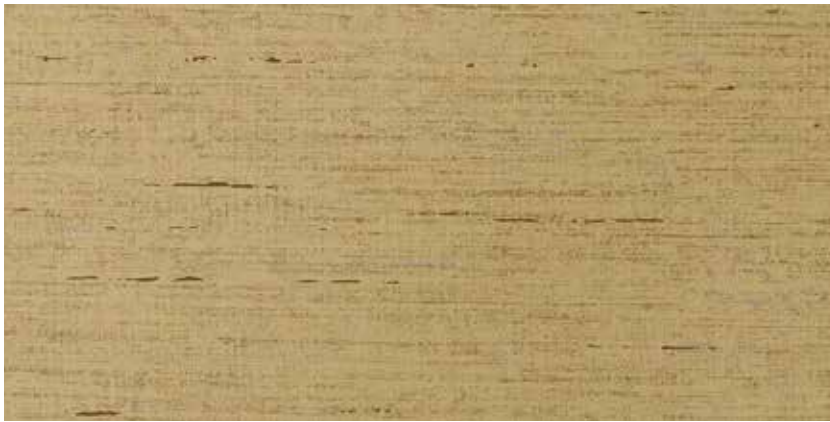
- State of Washington Building Specification for Indoor Air Quality
- California Section 01350 Indoor Air Quality Standard
- Phthalate Free
- Free of PBDE's (Brominated Flame Retardants)
- Environmental Product Declaration (EPD) Available
- Health Product Declaration (HPD) Available
- Aggressive manufacturing materials recovery and reuse program
- Highly cleanable water-based inks



PWT0601 Cranberry



PWT0602 Autumn Spice



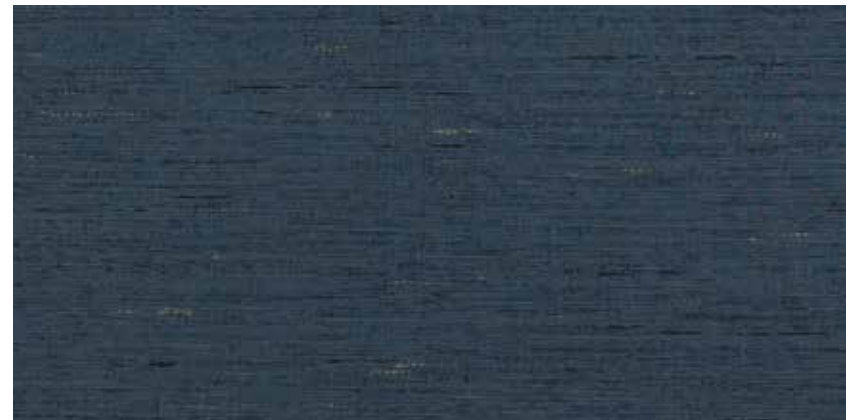
PWT0603 Ochre



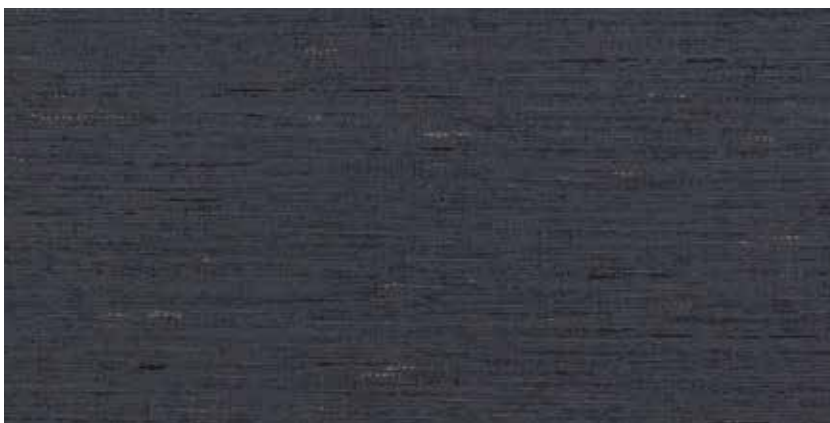
PWT0604 Willow



PWT0605 Seaside



PWT0606 Atlantic



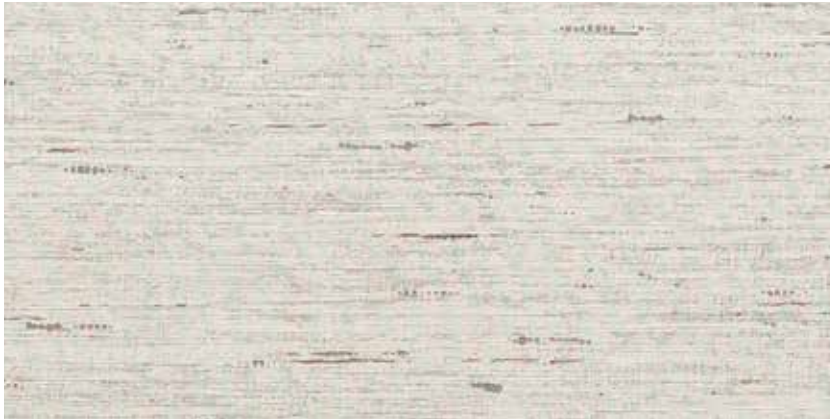
PWT0607 Navy



PWT0608 Oak



PWT0607 Navy



PWT0609 Porcelain



PWT0610 Gilded



PWT0611 Chiffon



PWT0612 Ecrú



PWT0613 Frost



PWT0614 Pebble

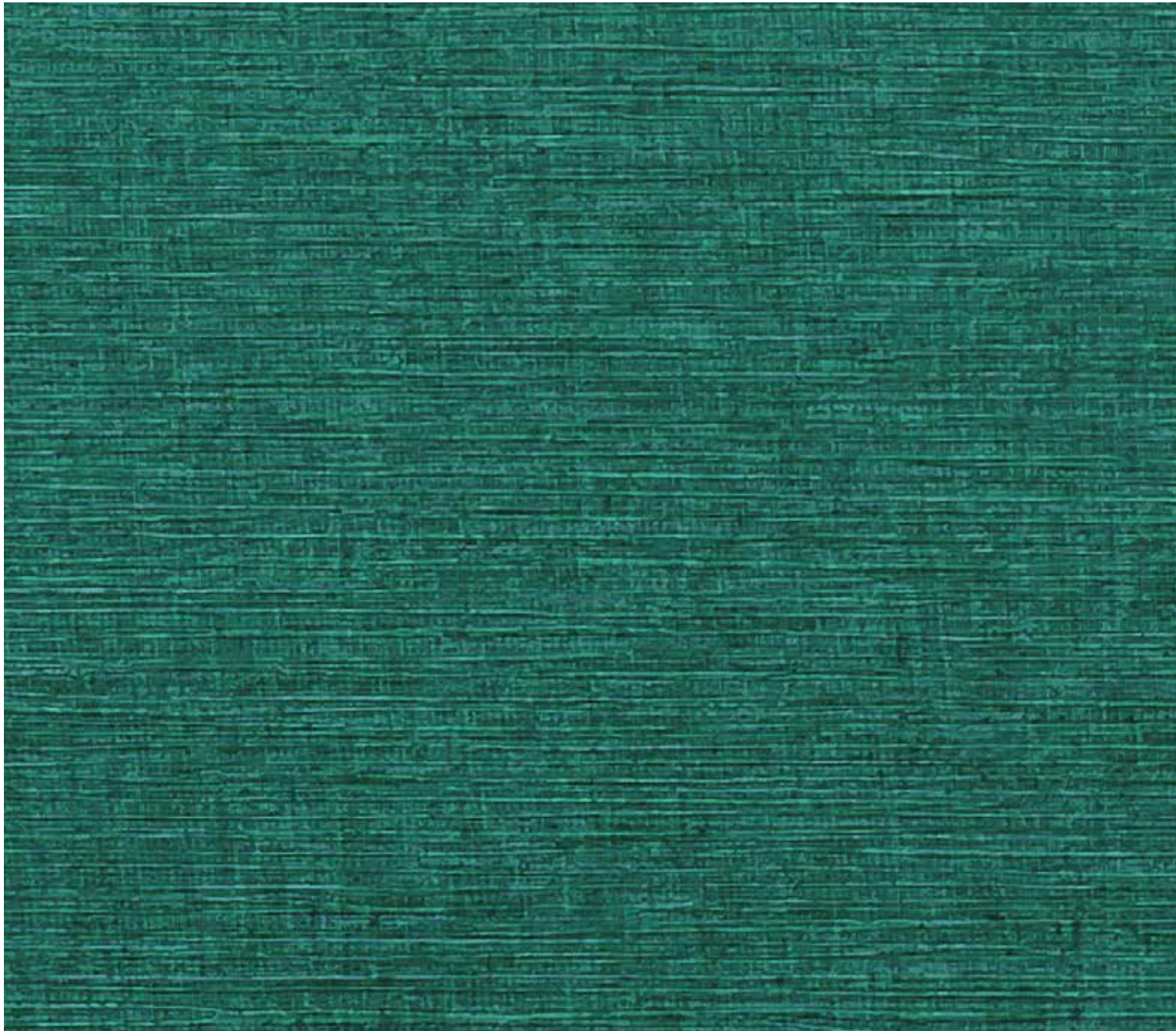


PWT0615 Mountain Air



PWT0616 Cocoa

PWT0705 Turquoise



SPECIFICATIONS & PROPERTIES

Weight: 20 oz/ly (452 gr/m²)
Width: 52/54" (132/137cm)
Backing: Osnaburg
Installation: Reverse Hang / Random Match

Custom colors, weights, widths and microventing are available.

ENVIRONMENTAL & HEALTH

- State of Washington Building Specification for Indoor Air Quality
- California Section 01350 Indoor Air Quality Standard
- Phthalate Free
- Free of PBDE's (Brominated Flame Retardants)
- Environmental Product Declaration (EPD) Available
- Health Product Declaration (HPD) Available
- Aggressive manufacturing materials recovery and reuse program
- Highly cleanable water-based inks



PWT0715 Slate



PWT0701 Cranberry



PWT0702 Pumpkin



PWT0703 Umber

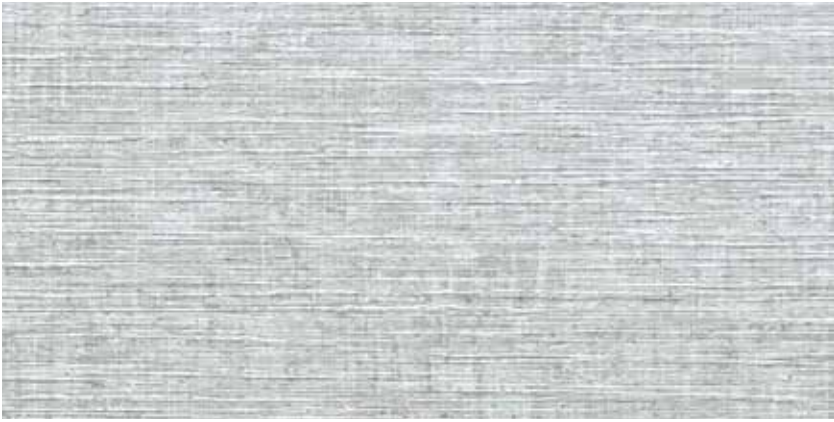


PWT0704 Caramel



PWT0705 Turquoise

More Colors Behind



PWT0706 Arctic



PWT0712 Corn



PWT0707 Cloud



PWT0708 Tide



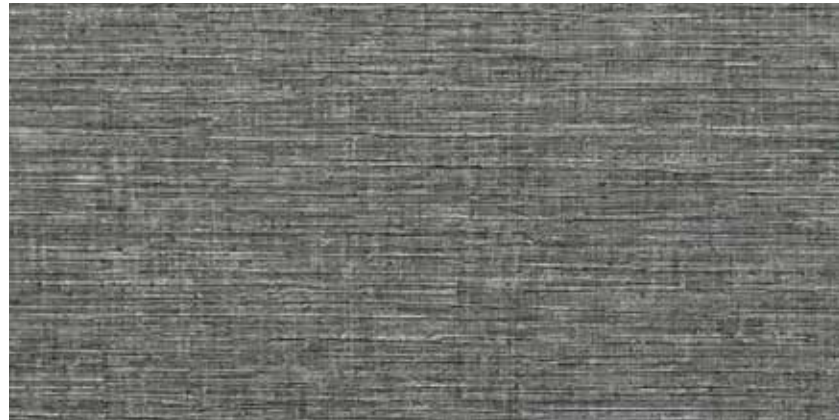
PWT0713 Pistachio



PWT0714 Honeydew



PWT0709 Wheat



PWT0715 Slate



PWT0710 Flour



PWT0711 Cream

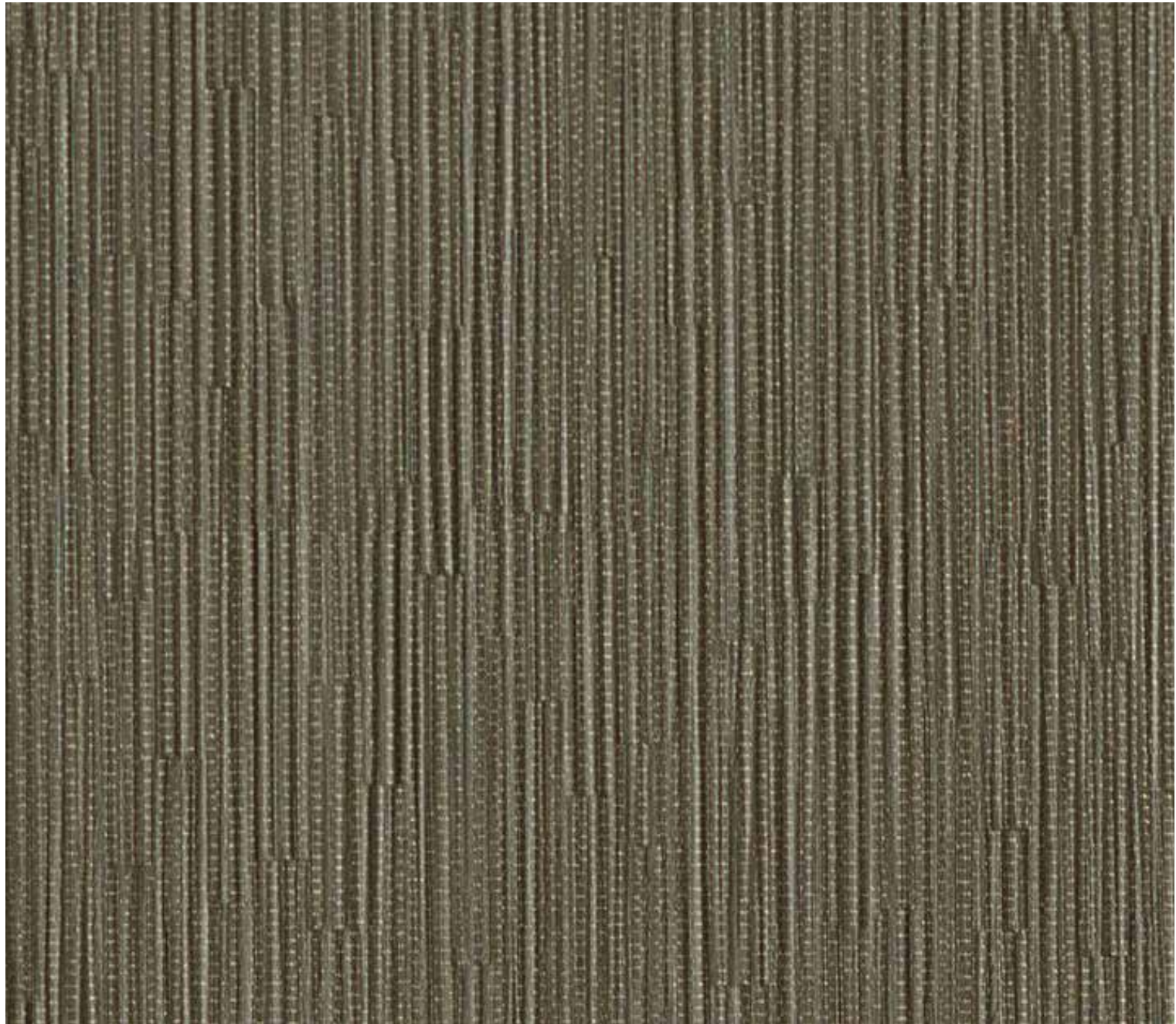


PWT0716 Bark



PWT0717 Dusk

PWT0818 Seagrass



SPECIFICATIONS & PROPERTIES

Weight: 20 oz/ly (452 gr/m²)
Width: 52/54" (132/137cm)
Backing: Osnaburg
Installation: Reverse Hang / Random Match

Custom colors, weights, widths and microventing are available.

ENVIRONMENTAL & HEALTH

- State of Washington Building Specification for Indoor Air Quality
- California Section 01350 Indoor Air Quality Standard
- Phthalate Free
- Free of PBDE's (Brominated Flame Retardants)
- Environmental Product Declaration (EPD) Available
- Health Product Declaration (HPD) Available
- Aggressive manufacturing materials recovery and reuse program
- Highly cleanable water-based inks



PWT0801 Shenandoah



PWT0802 Crafted



PWT0803 Reclaimed



PWT0804 Stormfield



PWT0805 Shibori Blue



PWT0806 Laurel



PWT0806 Laurel



PWT0807 Maltese



PWT0813 Lofty



PWT0808 Paper Fig



PWT0809 Augustine



PWT0814 Wild Rye



PWT0815 Steppe



PWT0810 Sideoat



PWT0816 Bungalow



PWT0811 Millet



PWT0812 Farro

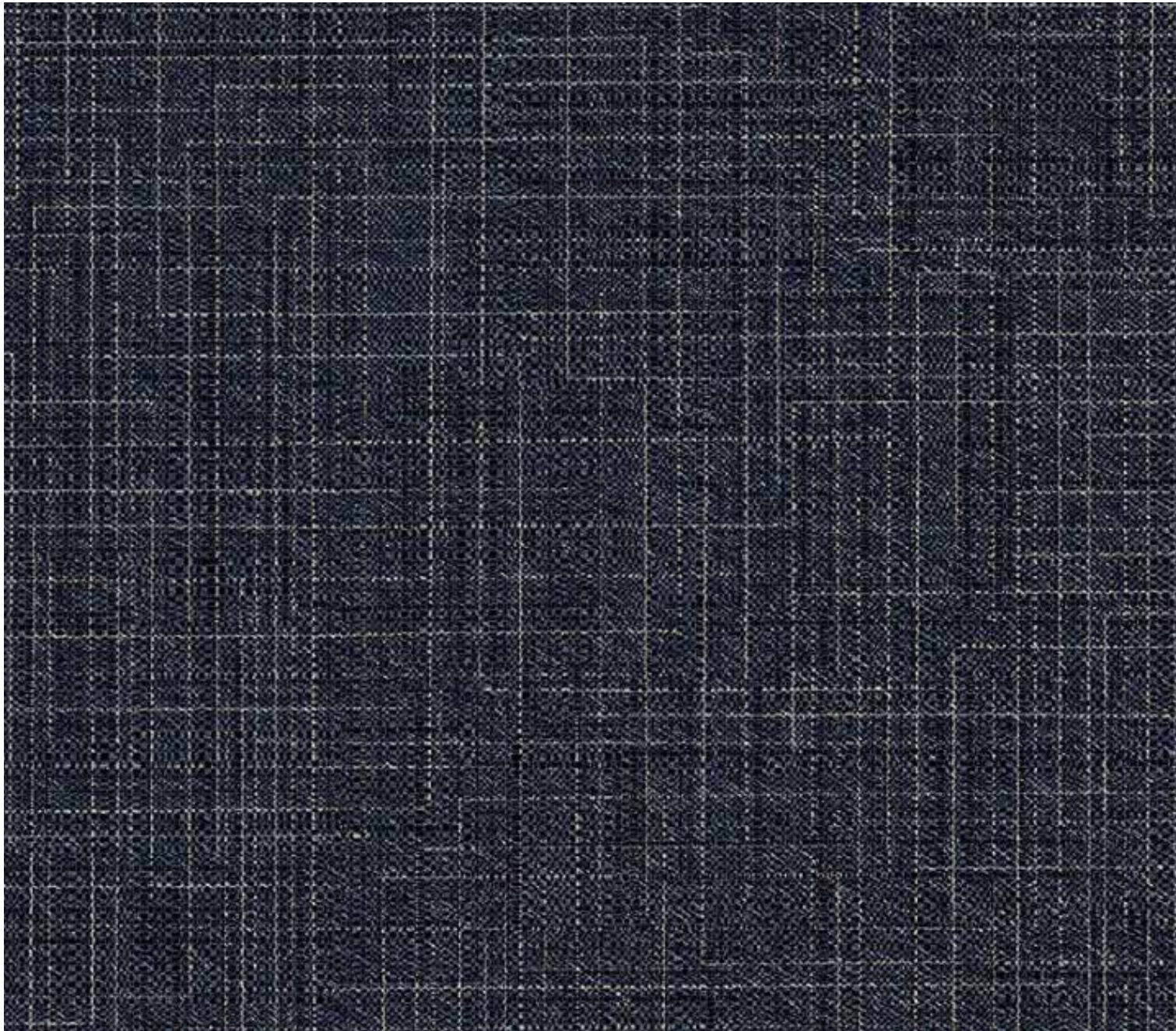


PWT0817 Rockwood



PWT0818 Seagrass

PWT0906 Royal Navy



SPECIFICATIONS & PROPERTIES

Weight: 20 oz/ly (452 gr/m²)
Width: 52/54" (132/137cm)
Backing: Osnaburg
Installation: Reverse Hang / Random Match

Custom colors, weights, widths and microventing are available.

ENVIRONMENTAL & HEALTH

- State of Washington Building Specification for Indoor Air Quality
- California Section 01350 Indoor Air Quality Standard
- Phthalate Free
- Free of PBDE's (Brominated Flame Retardants)
- Environmental Product Declaration (EPD) Available
- Health Product Declaration (HPD) Available
- Aggressive manufacturing materials recovery and reuse program
- Highly cleanable water-based inks



PWT0901 Foxy



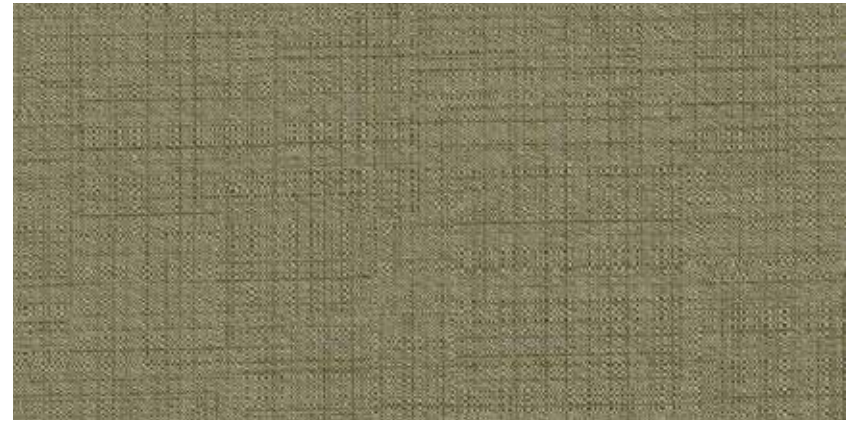
PWT0902 Scotch Mist



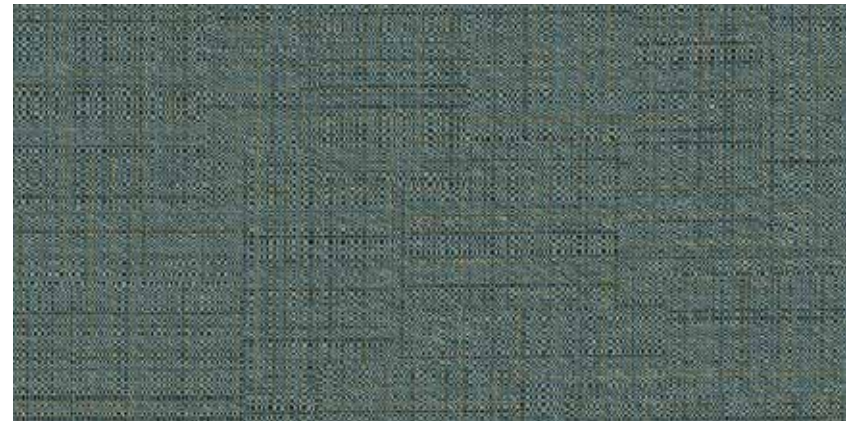
PWT0903 Tip Taupe



PWT0903 Tip Taupe



PWT0904 Julep



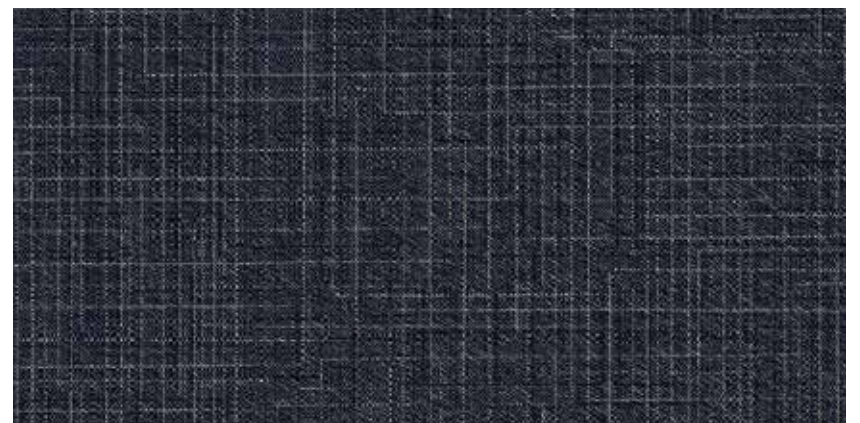
PWT0905 Enjoymint



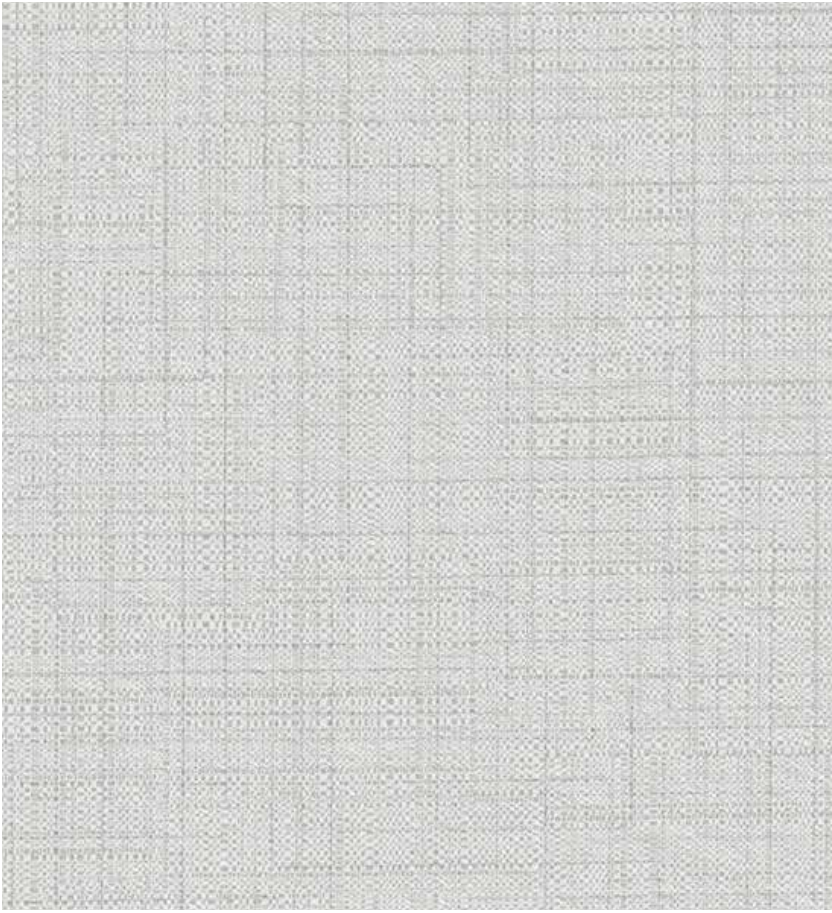
PWT0908 Draper



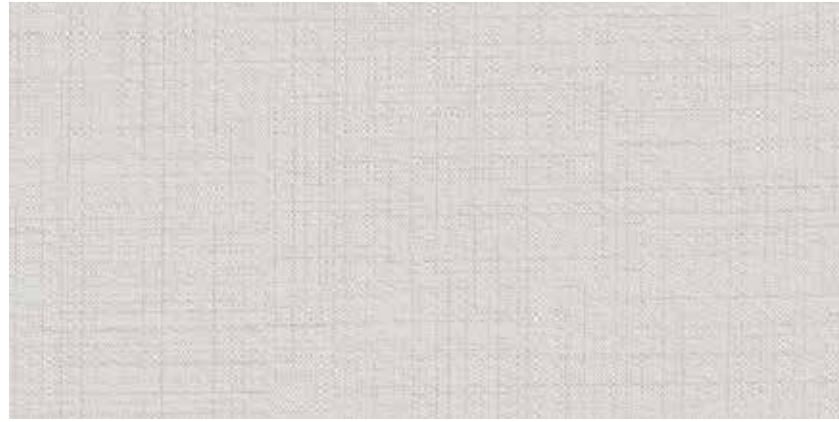
PWT0907 Nightlife



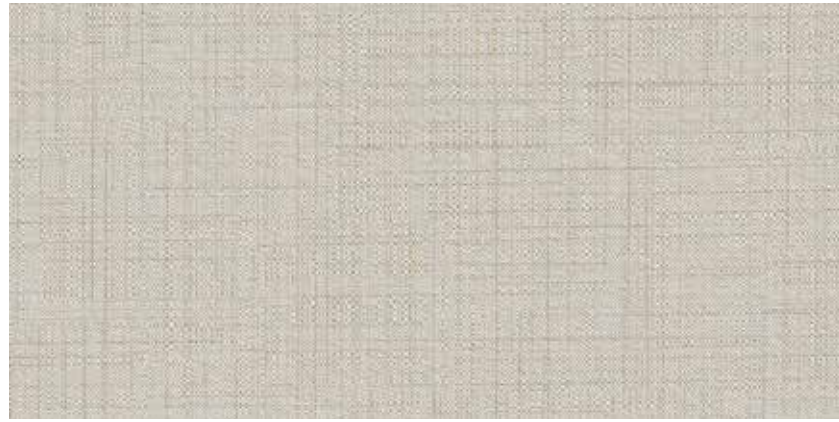
PWT0906 Royal Navy



PWT0909 My Kinda Pearl



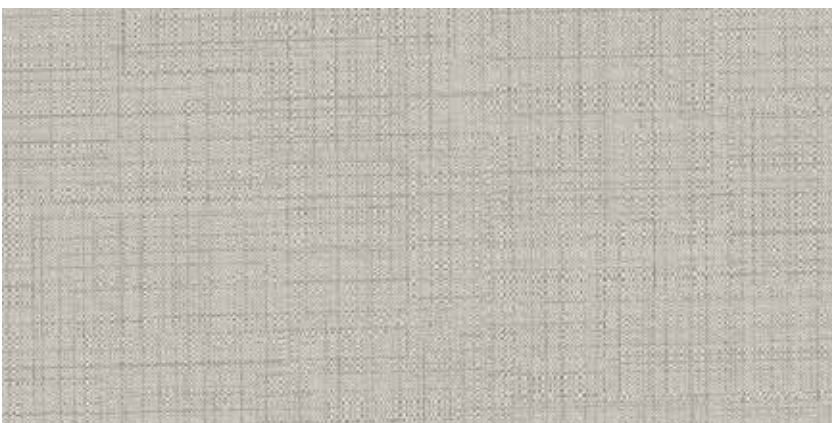
PWT0910 Svelte



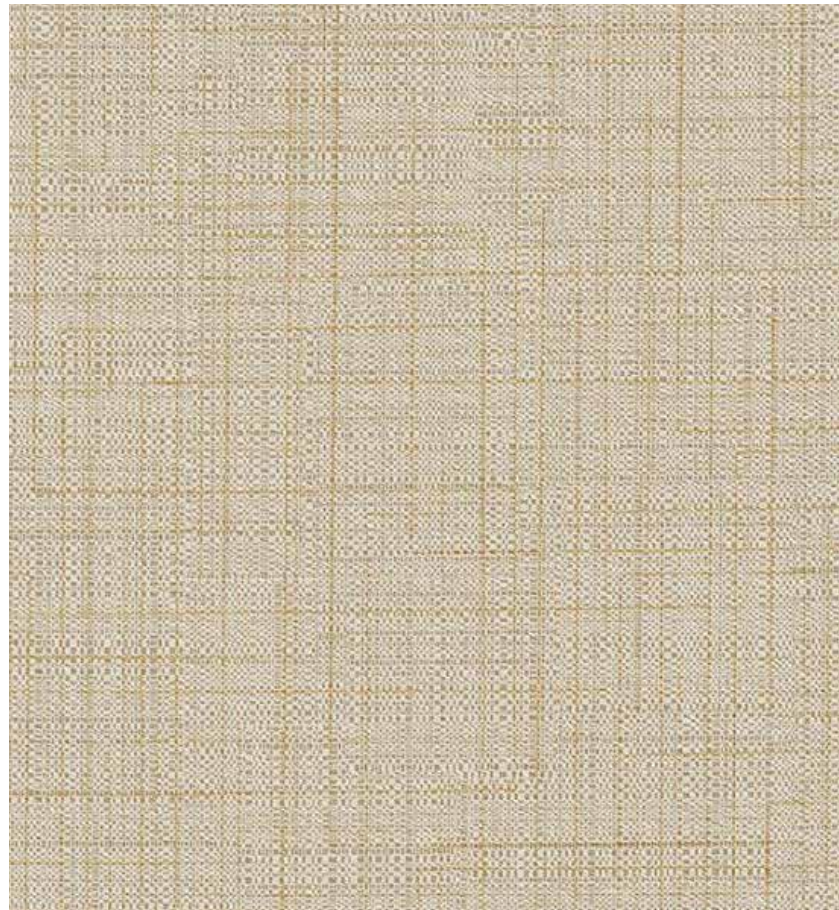
PWT0911 Linen



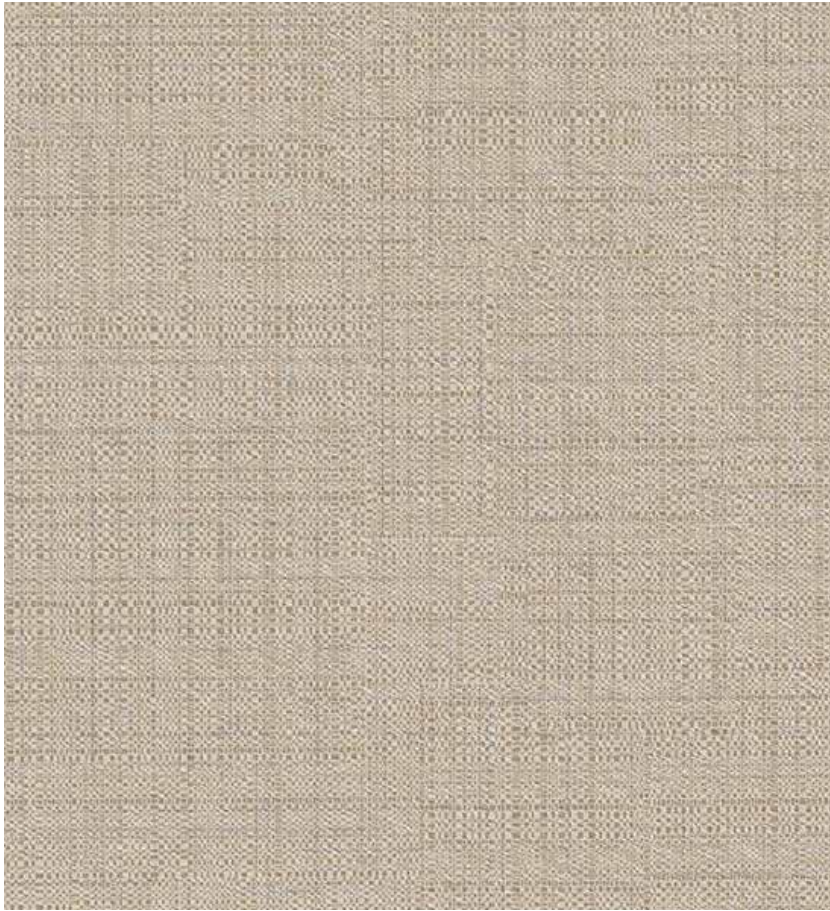
PWT0912 Highball



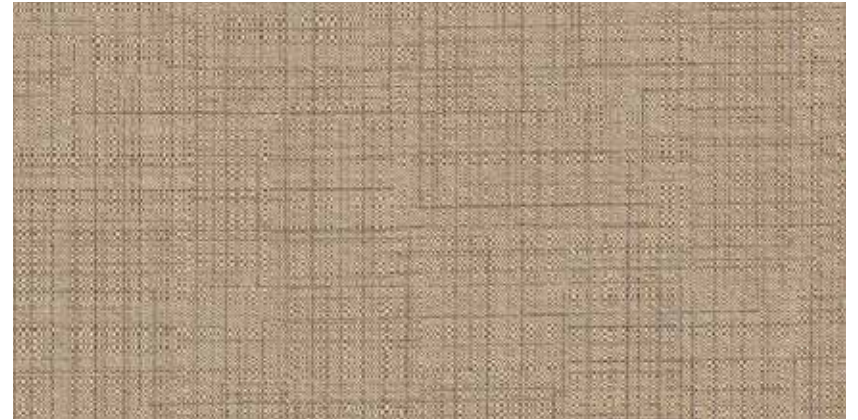
PWT0913 Sterling



PWT0914 Snickerdoodle



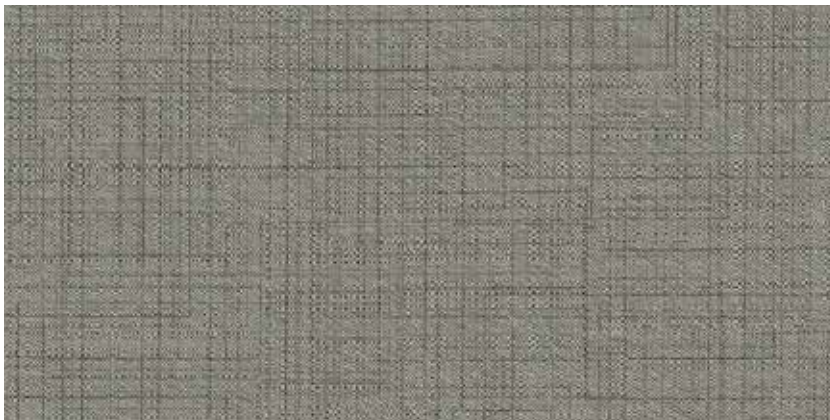
PWT0915 Fancy Pants



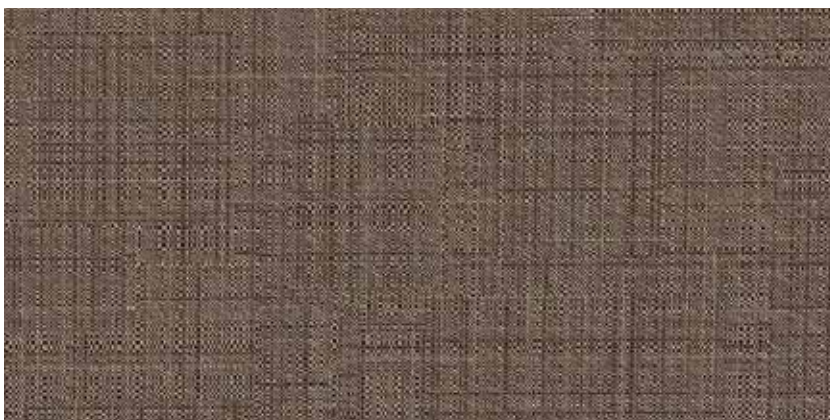
PWT0916 Hot Brown



PWT0917 Tailored



PWT0918 Sidecar

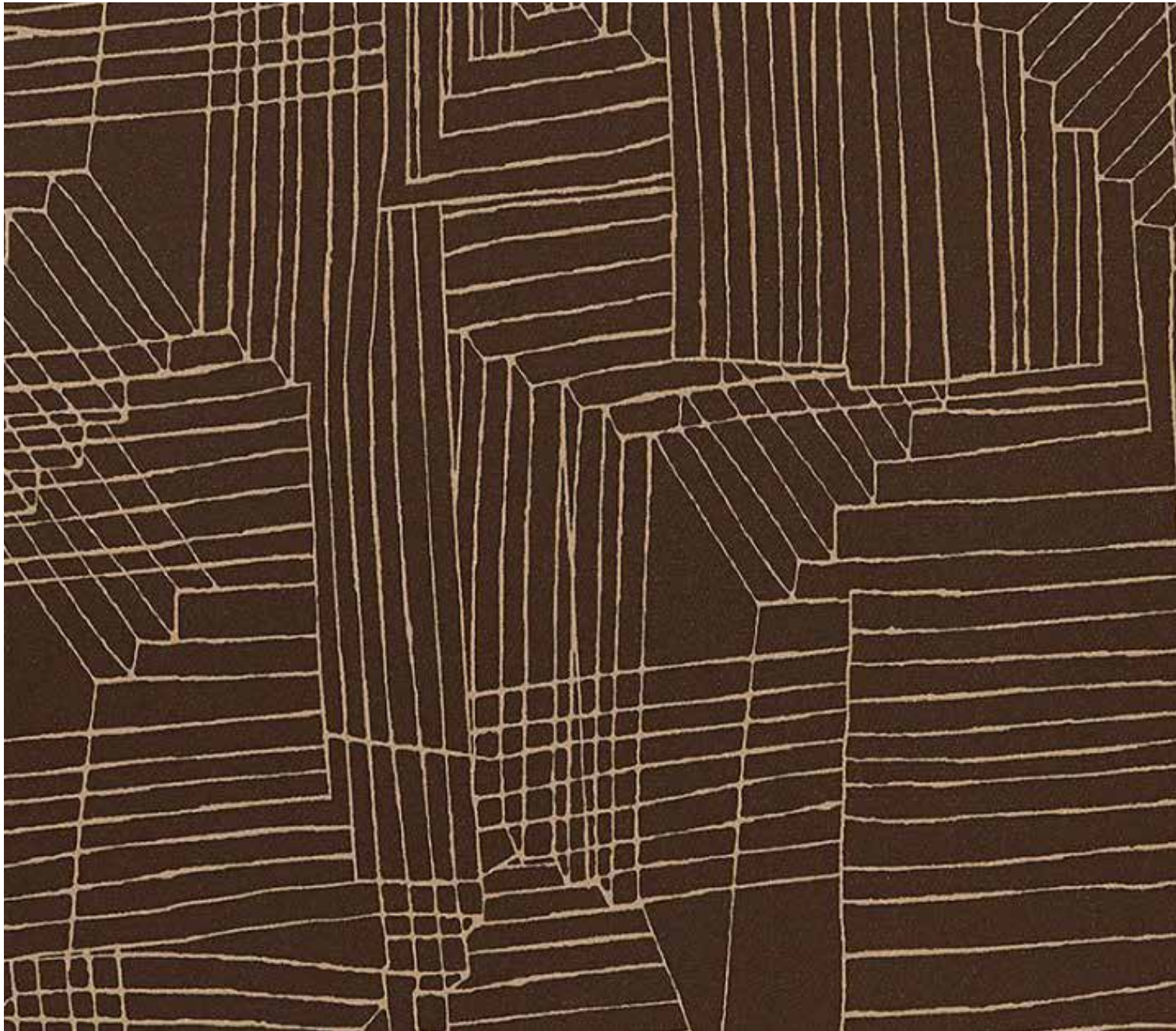


PWT0919 Well Suited



PWT0920 Midnight Magic

PWT1007 Nested



SPECIFICATIONS & PROPERTIES

Weight: 20 oz/ly (452 gr/m²)
Width: 52/54" (132/137cm)
Backing: Osnaburg
Installation: Reverse Hang / Random Match

Custom colors, weights, widths and microventing are available.

ENVIRONMENTAL & HEALTH

- State of Washington Building Specification for Indoor Air Quality
- California Section 01350 Indoor Air Quality Standard
- Phthalate Free
- Free of PBDE's (Brominated Flame Retardants)
- Environmental Product Declaration (EPD) Available
- Health Product Declaration (HPD) Available
- Aggressive manufacturing materials recovery and reuse program
- Highly cleanable water-based inks



PWT1001 Ruby Sky



PWT1002 Sockeye



PWT1003 Muted Brun



PWT1004 Satin Taupe



PWT1008 Live Wire



PWT1005 Beam of Light



PWT1006 Blue Yonder



PWT1010 Knight Divine



PWT1009 Stroke of Midnight



PWT1008 Live Wire



PWT1007 Nested



PWT1011 Gesso



PW1012 Lucky Star



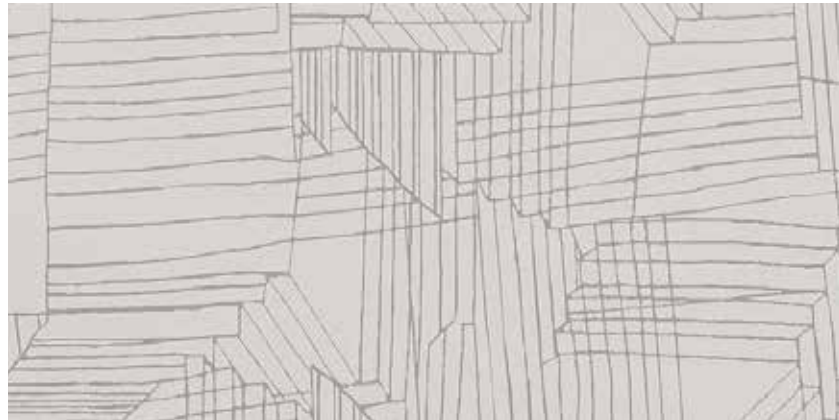
PWT1013 Antiqued Ash



PWT1014 Subtle Stitch



PWT1015 River valley



PWT1016 First Frost

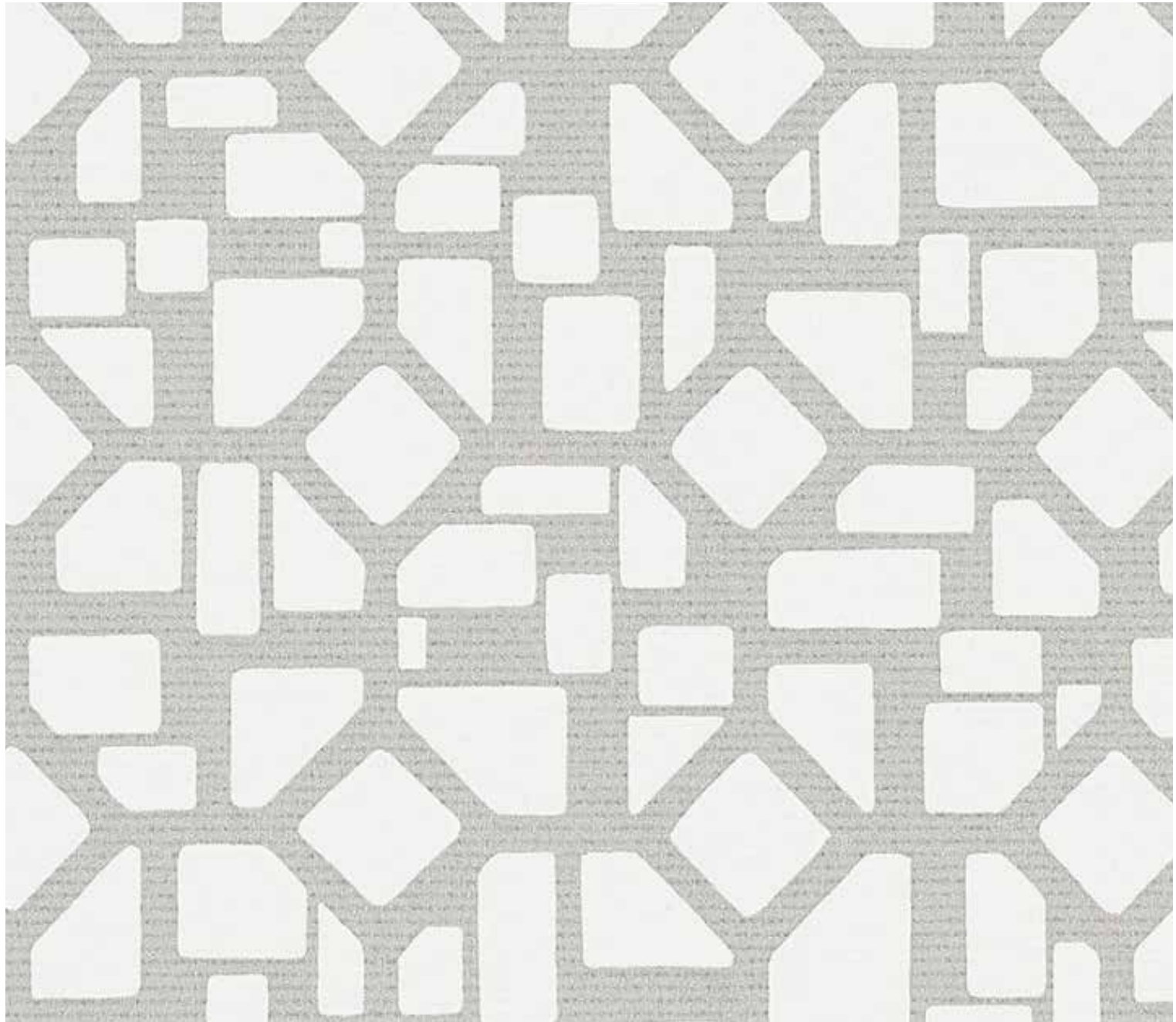


PWT1017 Skipping Stone



PWT1018 Arctic Air

PWT1110 Post Alley



SPECIFICATIONS & PROPERTIES

Weight: 20 oz/ly (452 gr/m²)
Width: 52/54" (132/137cm)
Backing: Non-woven
Installation: Reverse Hang / Straight Across Match

Custom colors, weights, widths and microventing are available.

ENVIRONMENTAL & HEALTH

- State of Washington Building Specification for Indoor Air Quality
- California Section 01350 Indoor Air Quality Standard
- Phthalate Free
- Free of PBDE's (Brominated Flame Retardants)
- Environmental Product Declaration (EPD) Available
- Health Product Declaration (HPD) Available
- Aggressive manufacturing materials recovery and reuse program
- Highly cleanable water-based inks



PWT1105 Negative Space



PWT1101 Belgian Block



PWT1102 Laclede Landing



PWT1103 Wharf



PWT1104 South Bend



PWT1105 Negative Space



PWT1106 Bardstown



PWT1107 Crown Glass



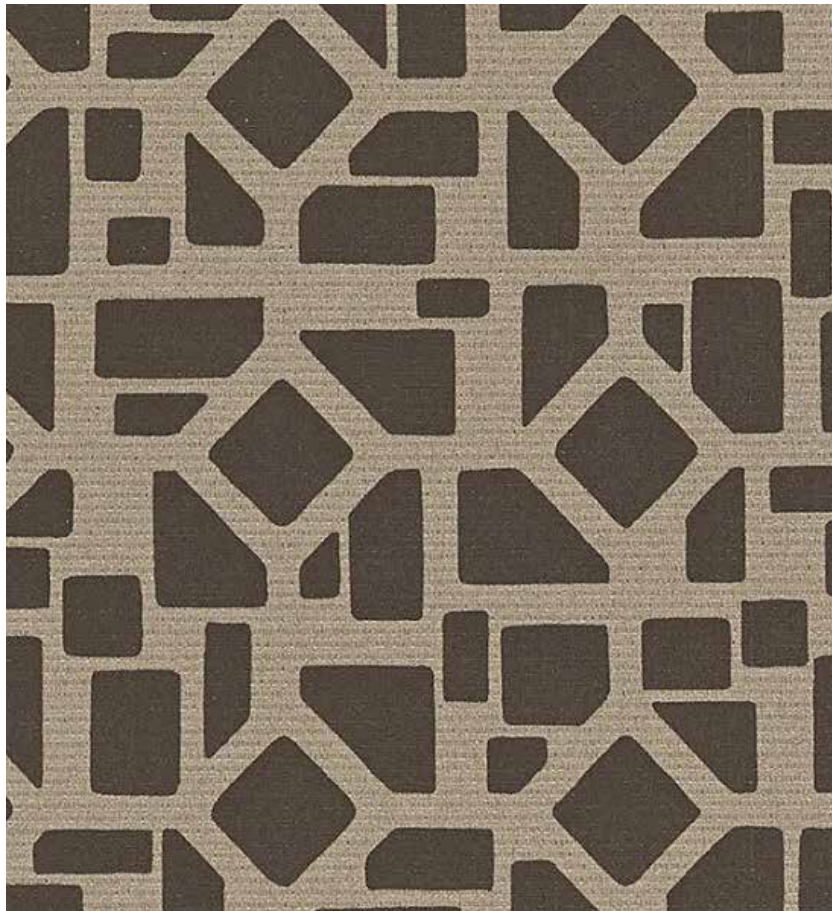
PWT1110 Post Alley



PWT1108 Elfreth



PWT1109 Hopscotch



PWT1111 Acorn Street



PWT1112 Cobblestone



PWT1113 Kaleidoscope



PWT1114 Rue de Barres



PWT1115 Red Rock

TEMPERATE WILLOW

PWT1205 Hermit Shale



SPECIFICATIONS & PROPERTIES

Weight: 20 oz/ly (452 gr/m²)
Width: 52/54" (132/137cm)
Backing: Non-woven
Installation: Reverse Hang / Straight Across Match

Custom colors, weights, widths and microventing are available.

ENVIRONMENTAL & HEALTH

- State of Washington Building Specification for Indoor Air Quality
- California Section 01350 Indoor Air Quality Standard
- Phthalate Free
- Free of PBDE's (Brominated Flame Retardants)
- Environmental Product Declaration (EPD) Available
- Health Product Declaration (HPD) Available
- Aggressive manufacturing materials recovery and reuse program
- Highly cleanable water-based inks



PWT1210 Little River



PWT1201 Icebridge



PWT1202 Valley Peak



PWT1203 Waimea



PWT1204 Bitter Springs



PWT1205 Hermit Shale



PWT1206 Snow Canyon



PWT1207 Paria



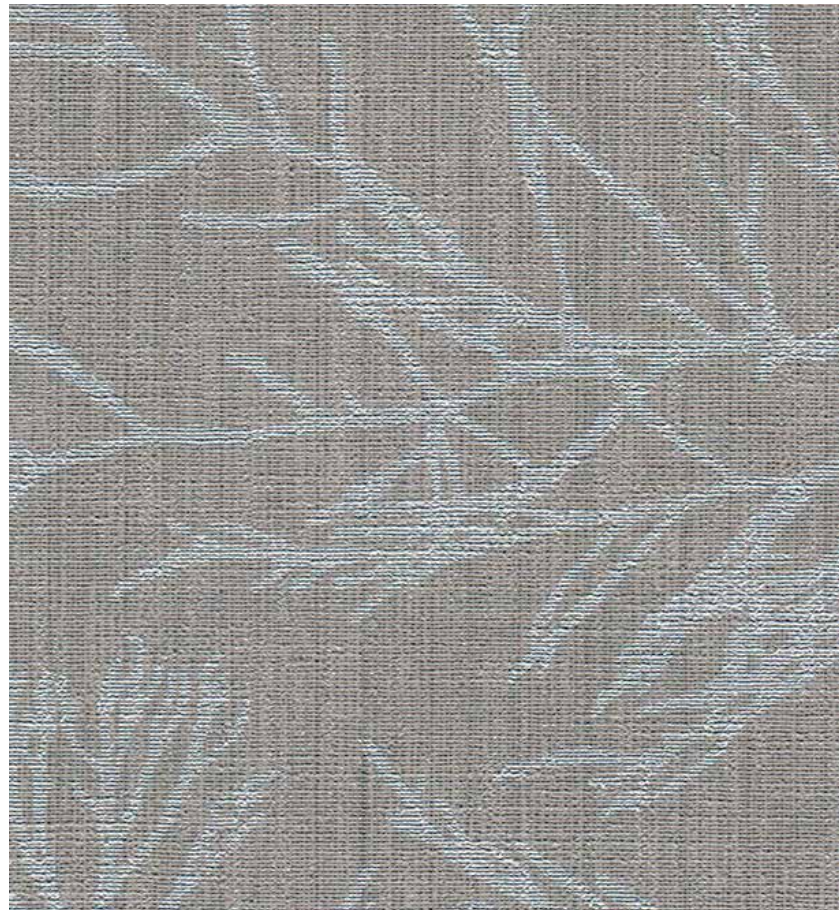
PWT1208 Pine Creek



PWT1209 Tower Butte



PWT1210 Little River



PWT1211 Rockslide



PWT1212 North Rim



PWT1213 Vermillion Cliffs



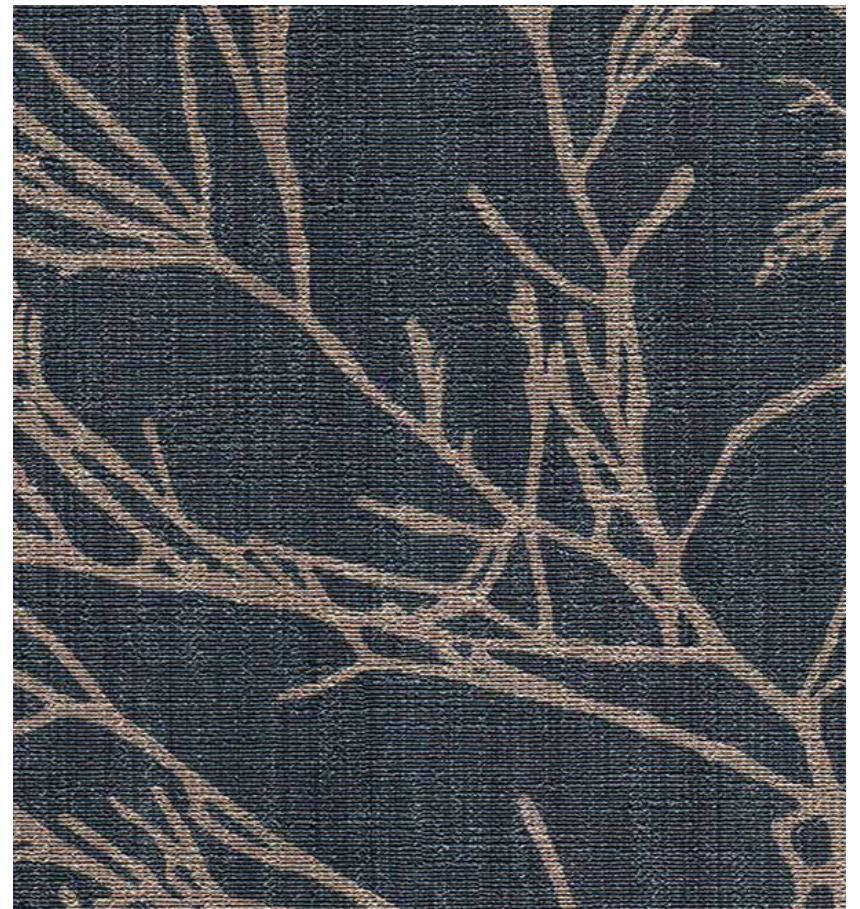
PWT1214 Palo Duro



PWT1215 Alstrom Point



PWT1216 Deep Water



PWT1217 Sky Mesa

PWT1304 West Shore



SPECIFICATIONS & PROPERTIES

Weight: 20 oz/ly (452 gr/m2)
Width: 52/54" (132/137cm)
Backing: Non-woven
Installation: Reverse Hang / Straight Across Match

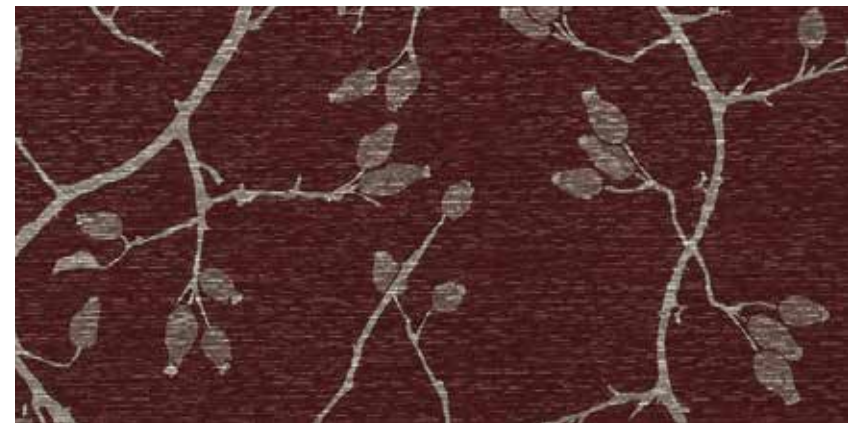
Custom colors, weights, widths and microventing are available.

ENVIRONMENTAL & HEALTH

- State of Washington Building Specification for Indoor Air Quality
- California Section 01350 Indoor Air Quality Standard
- Phthalate Free
- Free of PBDE's (Brominated Flame Retardants)
- Environmental Product Declaration (EPD) Available
- Health Product Declaration (HPD) Available
- Aggressive manufacturing materials recovery and reuse program
- Highly cleanable water-based inks



PWT1319 Checkmate



PWT1301 Bittersweet



PWT1302 Sundance



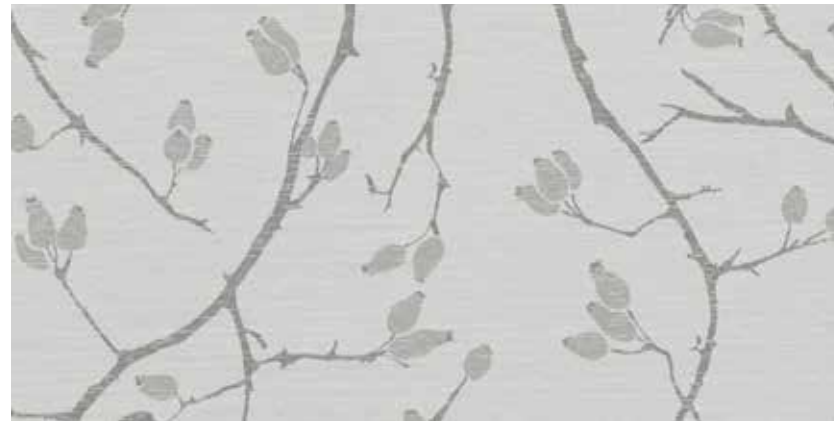
PWT1303 Palouse



PWT1304 West Shore



PWT1305 Picture Perfect



PWT1306 Iced Marble



PWT1307 Bisti



PWT1308 Hint of Grey



PWT1309 Social Light



PWT1310 Naturally Neutral



PWT1311 Madeleine



PWT1312 Beach Ridge



PWT1313 Dense Fog



PWT1314 Craftsman



PWT1315 Cacao Nib



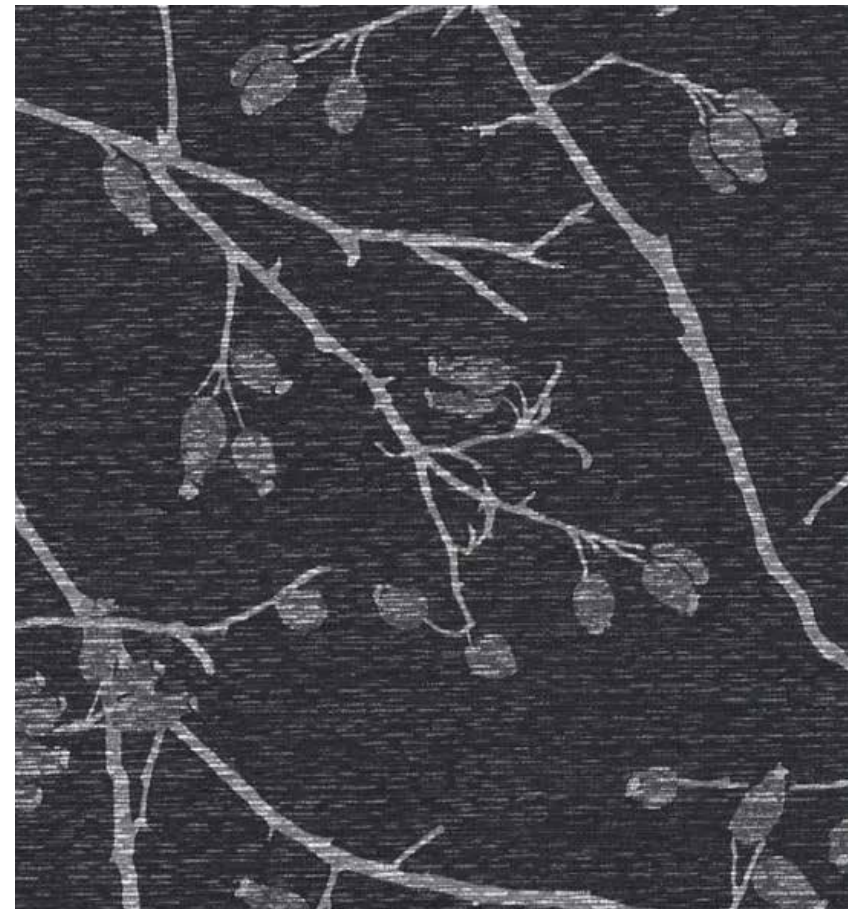
PWT1316 Sliver Screen



PWT1317 Light Rain



PWT1318 Weathervane



PWT1319 Checkmate

PWT1408 River Rail



SPECIFICATIONS & PROPERTIES

Weight: 20 oz/ly (452 gr/m²)
Width: 52/54" (132/137cm)
Backing: Osnaburg
Installation: Reverse Hang / Random Match

Custom colors, weights, widths and microventing are available.

ENVIRONMENTAL & HEALTH

- State of Washington Building Specification for Indoor Air Quality
- California Section 01350 Indoor Air Quality Standard
- Phthalate Free
- Free of PBDE's (Brominated Flame Retardants)
- Environmental Product Declaration (EPD) Available
- Health Product Declaration (HPD) Available
- Aggressive manufacturing materials recovery and reuse program
- Highly cleanable water-based inks



PWT1401 Derby Days



PWT1402 Clover



PWT1403 Cap's Quarters



PWT1404 Ideal White



PWT1405 Clean Slate



PWT1406 Milk Glass



PWT1407 Silver Fern



PWT1408 River Rail

PWT1418 Canyonland



PWT1409 Natural



PWT1410 Sandpearl



PWT1411 Beach Linen



PWT1412 Porchlights



PWT1413 Altitude



PWT1414 Ice House



PWT1415 Scribbly Gum



PWT1416 Urban Nature



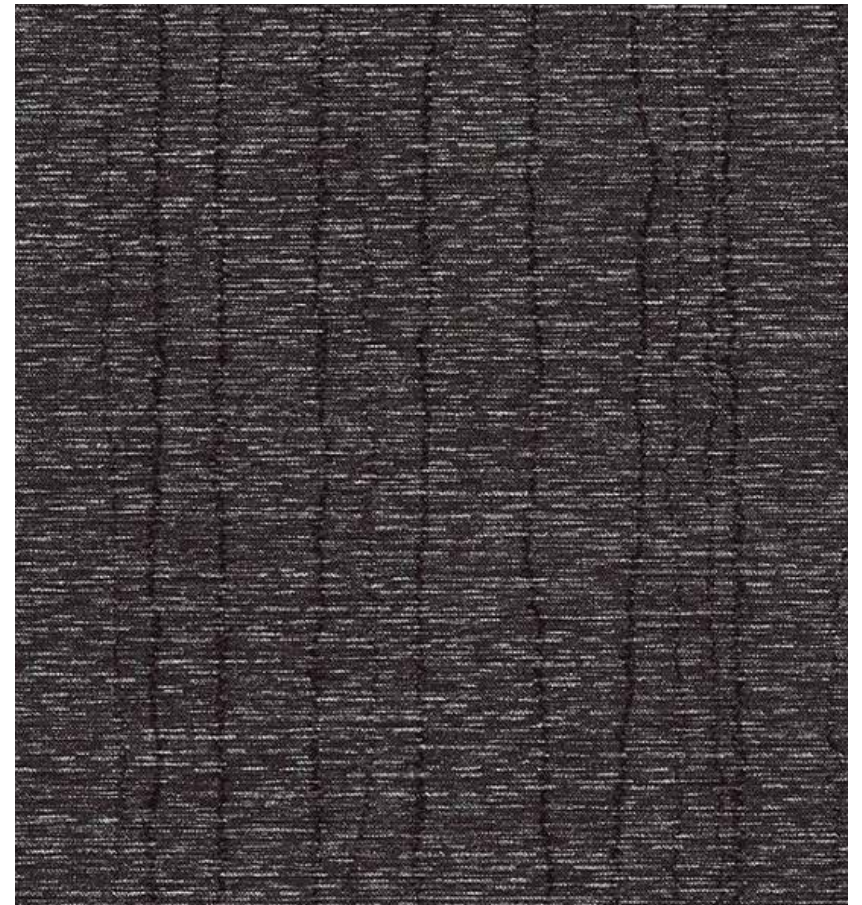
PWT1417 Basket Case



PWT1418 Canyonland



PWT1419 Nocturnal



PWT1420 Vintage Vibe

PWT1508 Dark Roast



SPECIFICATIONS & PROPERTIES

Weight: 20 oz/ly (452 gr/m²)
Width: 52/54" (132/137cm)
Backing: Osnaburg
Installation: Reverse Hang / Random Match

Custom colors, weights, widths and microventing are available.

ENVIRONMENTAL & HEALTH

- State of Washington Building Specification for Indoor Air Quality
- California Section 01350 Indoor Air Quality Standard
- Phthalate Free
- Free of PBDE's (Brominated Flame Retardants)
- Environmental Product Declaration (EPD) Available
- Health Product Declaration (HPD) Available
- Aggressive manufacturing materials recovery and reuse program
- Highly cleanable water-based inks



PWT1501 Terra Rosa



PWT1502 Lumen



PWT1503 River Walk



PWT1504 Blue Coal



PWT1505 Shadow Ridge



PWT1506 New Terrain



PWT1507 Bronzite



PWT1508 Dark Roast

PWT1507 Bronzite



PWT1509 Cloud Nine



PWT1510 Grey Whisp



PWT1511 Sugarcane



PWT1512 Bashful Beige



PWT1513 Porcellana



PWT1514 Raw Pearl



PWT1515 Midtown Taupe



PWT1516 Camo Stone

PWT1606 Chakra Stone



SPECIFICATIONS & PROPERTIES

Weight: 20 oz/ly (452 gr/m2)
Width: 52/54" (132/137cm)
Backing: Osnaburg
Installation: Reverse Hang / Random Match

Custom colors, weights, widths and microventing are available.

ENVIRONMENTAL & HEALTH

- State of Washington Building Specification for Indoor Air Quality
- California Section 01350 Indoor Air Quality Standard
- Phthalate Free
- Free of PBDE's (Brominated Flame Retardants)
- Environmental Product Declaration (EPD) Available
- Health Product Declaration (HPD) Available
- Aggressive manufacturing materials recovery and reuse program
- Highly cleanable water-based inks



PWT1601 Morning Glory



PWT1602 Winter Chill



PWT1603 Freshwater Pearl



PWT1604 Paper Doll



PWT1605 Top Shelf



PW1606 Chakra Stone

PWT1616 Deep In Thought



PWT1607 Seattle Sunrise



PWT1610 Adrift



PWT1608 Grenache



PWT1609 Harbor Seal



PWT1611 Beauty Sleep



PWT1612 Tidal Pool



PWT1616 Deep In Thought



PWT1613 Apple Butter



PWT1617 Rosemary & Thyme



PWT1618 Dark Hue-mor



PWT1614 World View



PWT1615 Cinnamon & Clove

TURRIN GRID

PWT1704 West Shore



SPECIFICATIONS & PROPERTIES

Weight: 20 oz/ly (452 gr/m²)
Width: 52/54" (132/137cm)
Backing: Osnaburg
Installation: Reverse Hang / Random Match

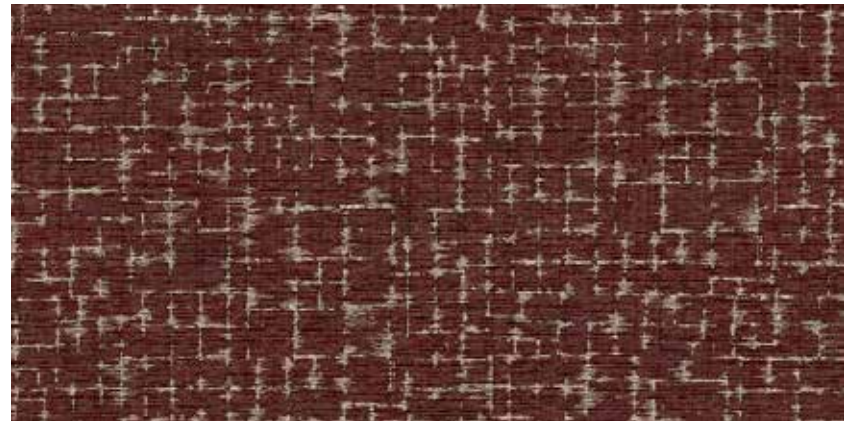
Custom colors, weights, widths and microventing are available.

ENVIRONMENTAL & HEALTH

- State of Washington Building Specification for Indoor Air Quality
- California Section 01350 Indoor Air Quality Standard
- Phthalate Free
- Free of PBDE's (Brominated Flame Retardants)
- Environmental Product Declaration (EPD) Available
- Health Product Declaration (HPD) Available
- Aggressive manufacturing materials recovery and reuse program
- Highly cleanable water-based inks



PWT1715 Dense Fog,
PWT1718 Weathervane



PWT1701 Bittersweet



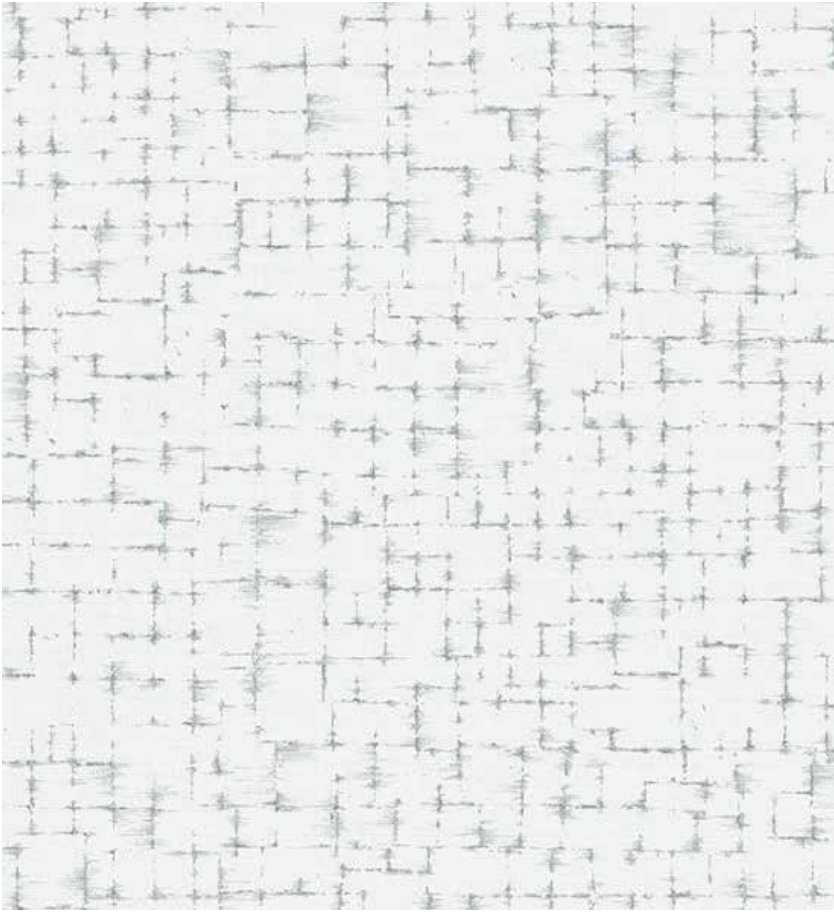
PWT1702 Sundance



PWT1703 Palouse



PWT1704 West Shore



PWT1705 Picture Perfect



PWT1706 Iced Marble



PWT1707 Bisti



PWT1708 Hint of Grey



PWT1709 Social Light



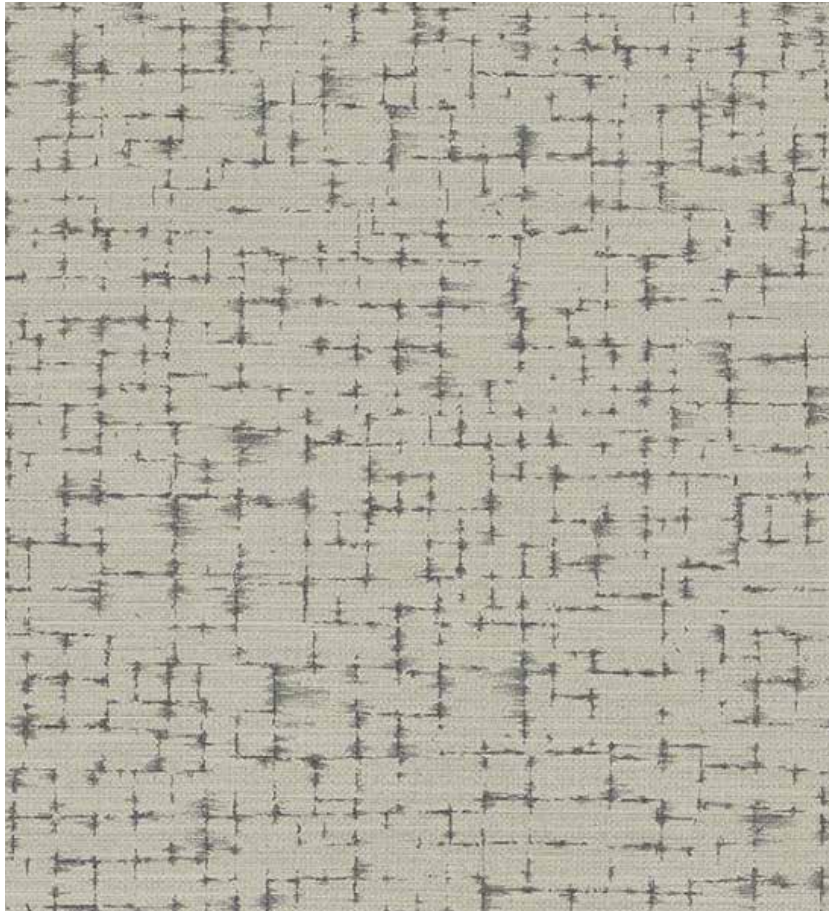
PWT1710 Naturally Neutral



PWT1711 Madeleine



PWT1712 Beach Ridge



PWT1715 Dense Fog



PWT1714 Craftsman



PWT1715 Cacao Nib



PWT1716 Sliver Screen



PWT1717 Light Rain

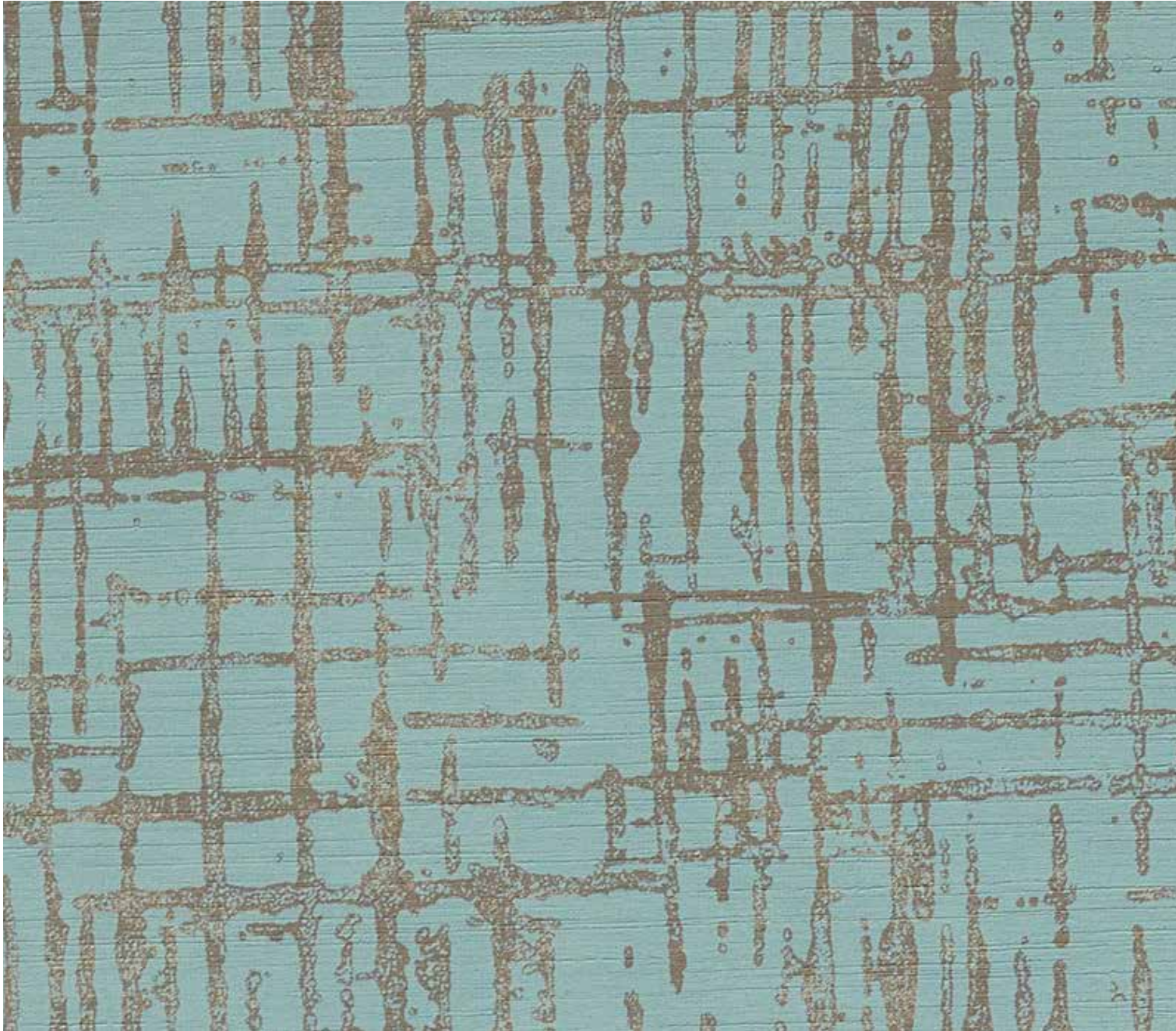


PWT1718 Weathervane



PWT1719 Checkmate

PWT1804 Parakeet



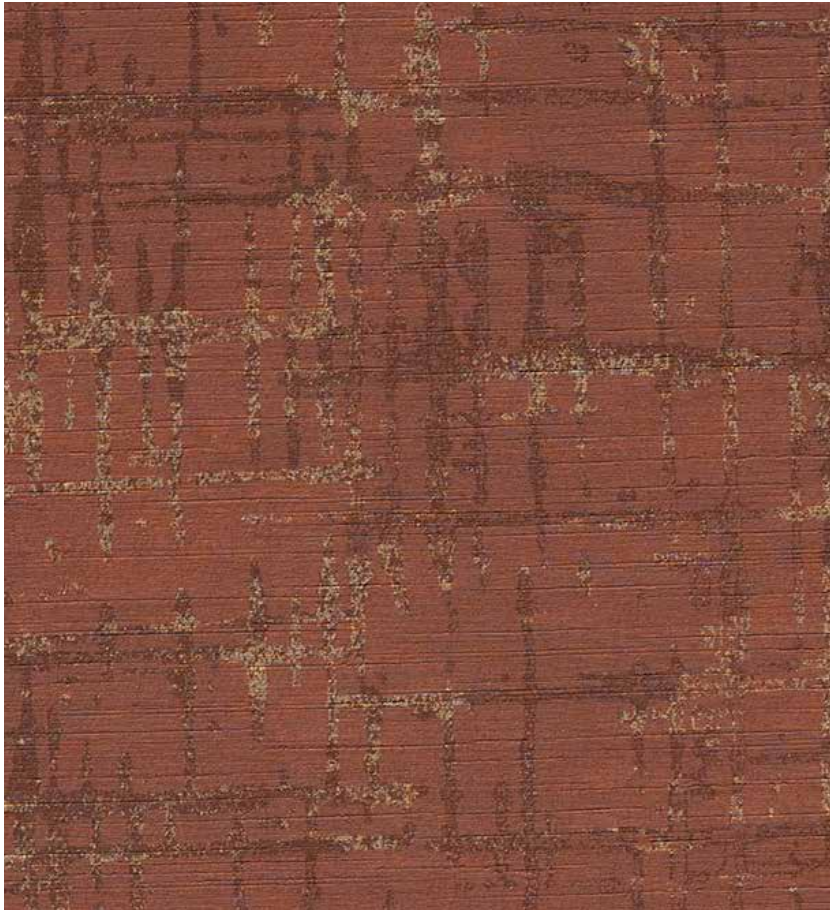
SPECIFICATIONS & PROPERTIES

Weight: 20 oz/ly (452 gr/m²)
Width: 52/54" (132/137cm)
Backing: Osnaburg
Installation: Reverse Hang / Random Match

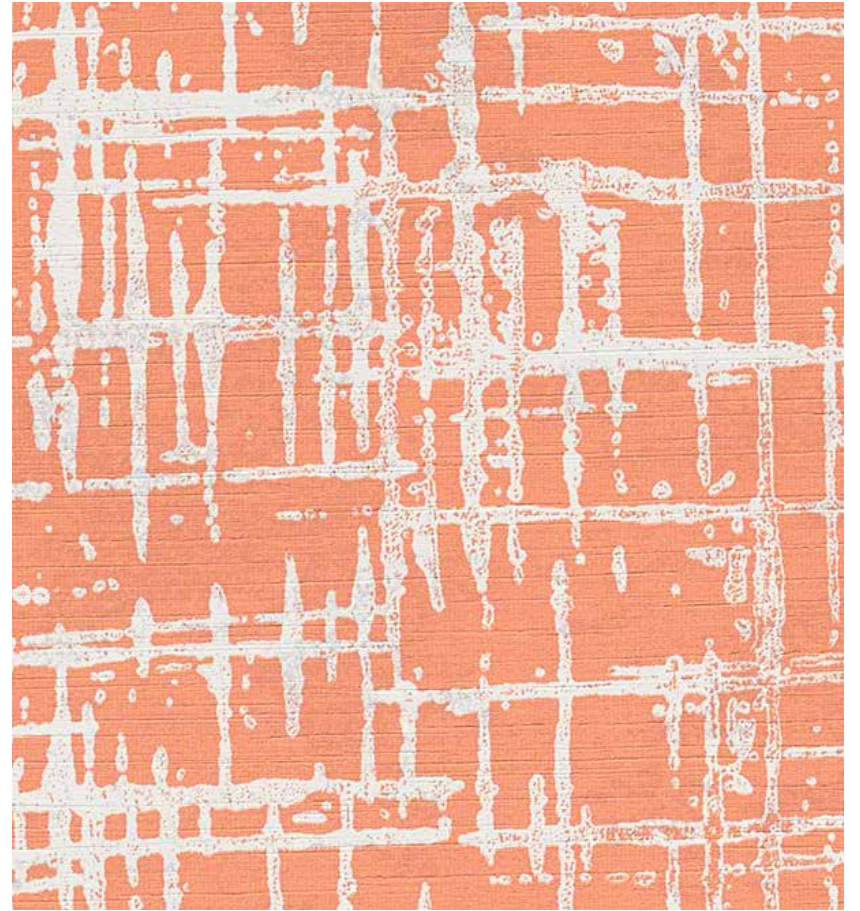
Custom colors, weights, widths and microventing are available.

ENVIRONMENTAL & HEALTH

- State of Washington Building Specification for Indoor Air Quality
- California Section 01350 Indoor Air Quality Standard
- Phthalate Free
- Free of PBDE's (Brominated Flame Retardants)
- Environmental Product Declaration (EPD) Available
- Health Product Declaration (HPD) Available
- Aggressive manufacturing materials recovery and reuse program
- Highly cleanable water-based inks



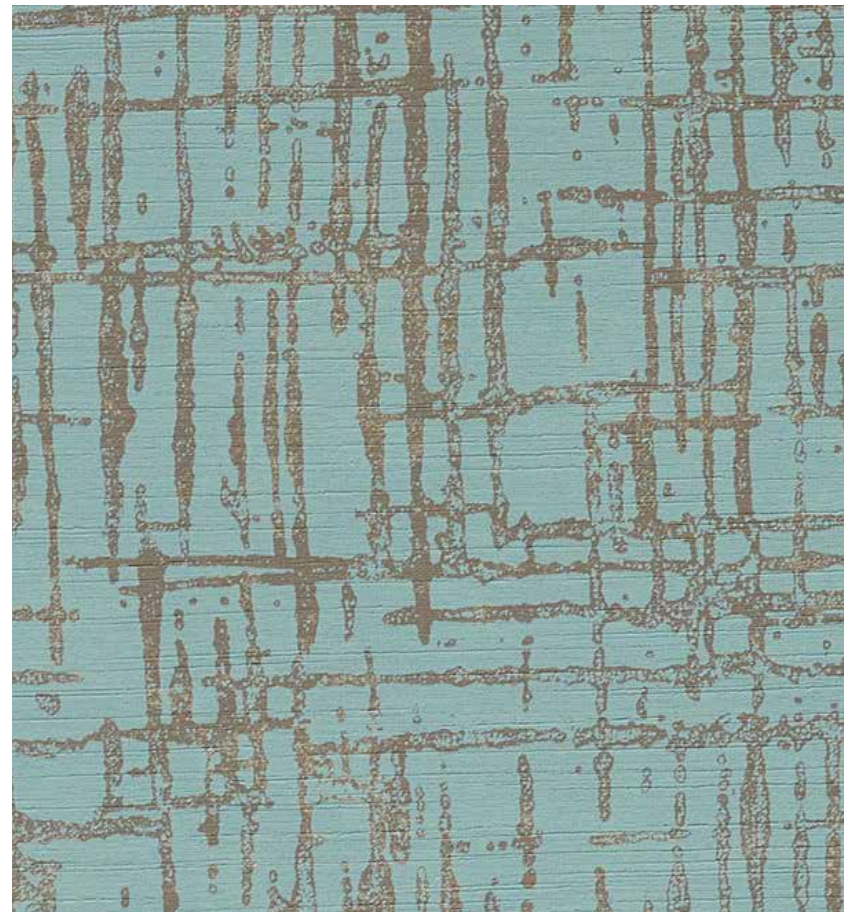
PWT1801 Sundried Tomato



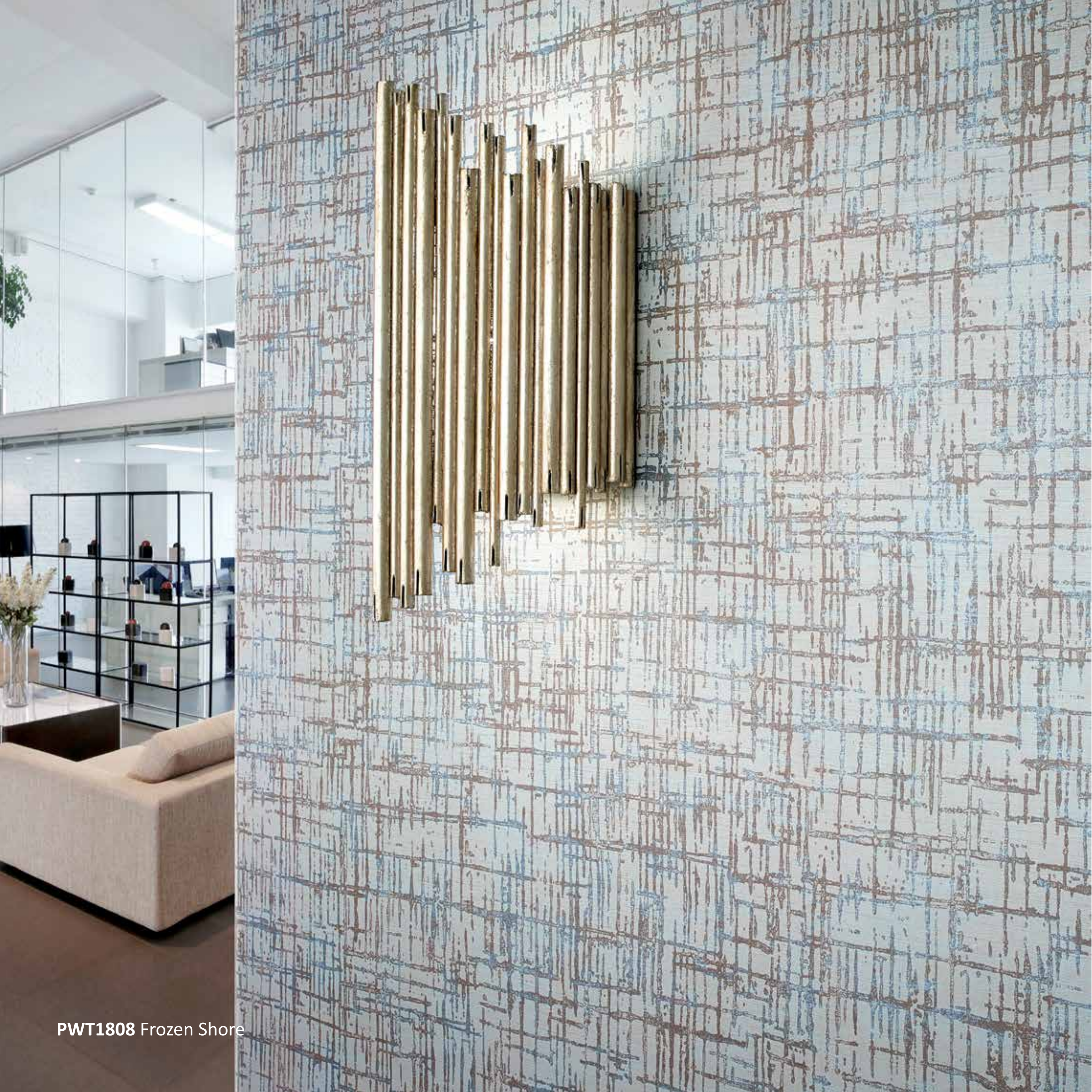
PWT1802 Coral Comb



PWT1803 Midnight Sail



PWT1804 Parakeet



PWT1808 Frozen Shore



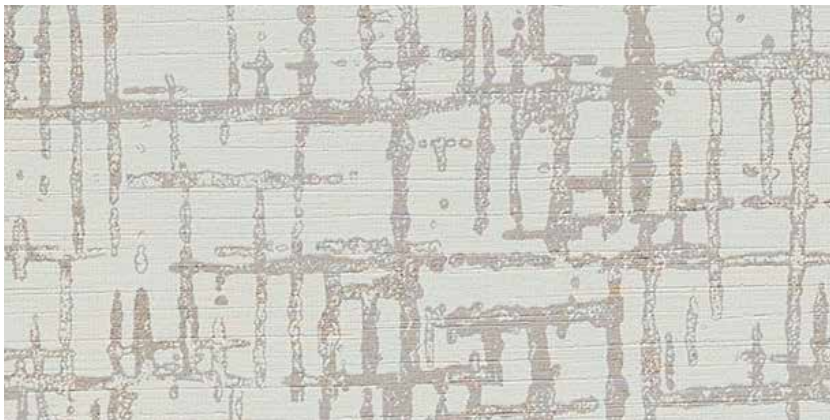
PWT1805 Porcelain Glaze



PWT1811 Lemon Shortbread



PWT1812 Taro



PWT1806 Turtle Dove



PWT1813 Sunlit Field



PWT1814 Spice Market



PWT1807 Chinchilla



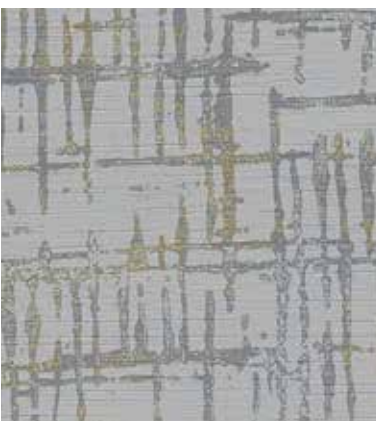
PWT1808 Frozen Shore



PWT1815 Golan Heights



PWT1816 Manzilla



PWT1809 Stardust



PWT1810 Bonfire Ash



PWT1817 Morchella



PWT1818 Neapolitan Coffee

Page	Pattern No	Pattern Name	Weight (oz)	Pattern Repeat (In)		Pattern Match	Backing	Roll Size
				Horizontal	Vertical			
1 - 4	PWT0101 - PWT0113	Serra	20	0	0	Reverse Random	Non-Woven	54" x 30yds
5 - 6	PWT0201 - PWT0207	Raku	20	0	0	Straight Random	Non-Woven	54" x 30yds
7 - 9	PWT0301 - PWT0320	Templeton Satin	20	0	0	Reverse Random	Osnaburg	54" x 30yds
10 - 12	PWT0401 - PWT0417	Hexad Texture	20	0	0	Reverse Random	Osnaburg	54" x 30yds
13 - 16	PWT0501 - PWT0518	Turrin Silk	20	0	0	Reverse Random	Osnaburg	54" x 30yds
17 - 20	PWT0601 - PWT0616	Bach	20	0	0	Reverse Random	Osnaburg	54" x 30yds
21 - 23	PWT0701 - PWT0717	Bali	20	0	0	Reverse Random	Osnaburg	54" x 30yds
24 - 26	PWT0801 - PWT0818	Chindi	20	0	0	Reverse Random	Osnaburg	54" x 30yds
27 - 30	PWT0901 - PWT0920	Nagano	20	0	0	Reverse Random	Osnaburg	54" x 30yds
31 - 33	PWT1001 - PWT1018	Downtown	20	0	0	Reverse Random	Osnaburg	54" x 30yds
34 - 36	PWT1101 - PWT1115	Tract	20	0	0	Reverse Match	Non-Woven	54" x 30yds
37 - 40	PWT1201 - PWT1217	Temperate Willow	20	53	18	Reverse Match	Non-Woven	54" x 30yds
41 - 44	PWT1301 - PWT1318	Turrin Botanical	20	0	0	Reverse Match	Non-Woven	54" x 30yds
45 - 48	PWT1401 - PWT1420	Rainn	20	0	0	Reverse Random	Osnaburg	54" x 30yds
49 - 51	PWT1501 - PWT1516	Torrent	20	0	0	Reverse Random	Osnaburg	54" x 30yds
52 - 54	PWT1601 - PWT1618	Andreas	20	0	0	Reverse Random	Osnaburg	54" x 30yds
55 - 58	PWT1701 - PWT1718	Turrin Grid	20	0	0	Reverse Random	Osnaburg	54" x 30yds
59 - 62	PWT1801 - PWT1818	Trellis	20	0	0	Reverse Random	Osnaburg	54" x 30yds

WALLCOVERING ADHESIVE

- Specially formulated for all types of contract wallcoverings
- Non Hazardous, Non Toxic, Non Flammable, Non-Staining
- Solvent Free and Formaldehyde Free
- VOC is 0.45mg/kg
- Made in England



COMPLIES TO:

- ♥ Regulation (EC No 1907/2006)
- ♥ CLP European Regulation (EC) No 1272/2008
- ♥ BS3046/1981



Installation and Maintenance Guidelines

BEFORE YOU BEGIN

Examine the material carefully to ensure that the pattern, colour, and quality are satisfactory and as ordered. Check that the quantity and dimensions match the required specifications, prior to cutting. In the event that any discrepancies are found, STOP and contact Goodrich Global before proceeding.

We recommend that the wall moisture content does not exceed 4% using a reputable moisture meter, and that active moisture infiltration, condensation, and/or accumulation - particularly in warm, humid climates - is not present. If walls show mould, mildew or visible moisture damage, or if moisture content exceeds recommendations, do not proceed with installation until the condition has been fully corrected under the direction of a qualified professional. Goodrich Global will not be responsible for any performance or quality issues if moisture problems are not addressed before or following installation.

HANGING GUIDELINES

Wallcovering rolls are numbered consecutively and should be cut and installed in reverse sequence, starting with the highest numbered roll. All strips should be hung in sequence as they are cut from the roll, using full widths of material, whenever possible. Install the wallcovering under permanent lighting conditions to evaluate colour and texture uniformity.

When hanging non-reversible or matching patterns, measure the wall height, allowing for pattern match, add 4", and take trim using a straight edge to ensure alignment across seams. Large, dominant pattern repeats require more careful planning as far as starting point, ceiling line, chair rails, door/window headers, etc. Patterns are meant to match at eye level and may run off slightly at the top and bottom of the wall. When hanging textured or random-match patterns, reverse hang alternate strips for a more uniform appearance; overlap and double cut, being careful not to score the wall. If the pattern effect is not acceptable after three strips are hung, re-hang strip #2 without reversing.

If any defect, colour variation, or unacceptable pattern effect is noticeable after three panels are cut and hung, STOP and contact Goodrich Global immediately. Goodrich Global cannot accept any claims on labour or material after more than three lengths have been installed.

ADHESIVE APPLICATION

Apply a uniform coat of a premixed vinyl wallcovering adhesive to the back of the material using a short-napped paint roller or stiff bristle brush (a pasting machine can be used at the installer's discretion). Goodrich WA202 adhesive is recommended for heavyweight vinyl wallcovering. Fold each sheet over and allow up to 10 minutes booking time for the adhesive to penetrate the backing of the lightweight vinyl material (up to 15 minutes for heavyweight vinyl), and to avoid paste drying at the edges.

INSTALLATION

Hang the first strip to a plumb line, overlapping the ceiling and baseboard, within 12 minutes of paste application. Use a stiff bristle brush to ensure that the wallcovering makes contact with the wall. A plastic smoother can also be used on non-metallic Vinyls, providing only light pressure is applied (do not use sharp-edged tools). Smooth from the middle to the outside edges, being careful not to stretch the material, and work out all air bubbles. Trim at the ceiling and baseboard with a sharp razor blade. For matched patterns, butt the second strip to the edge of the first and smooth out firmly. When double cutting non-matching patterns, place a 2-3" wide strip behind the seam to avoid scoring the wall. Flatten seams exerting light pressure with a seam roller. Low-adhesive painter's tape can be used to keep the face of the seams clean. Before applying the next strip, trim the top and bottom as with the first panel, and proceed in the same manner around the room.

Avoid cutting narrow widths of material for placement above doors and below windows. Vertical joints should not occur less than six inches from inside or outside corners. When trimming at chair rails and ceilings, always use a broad knife rather than a straight edge. Take extra care in keeping the adhesive off the face of the wallcovering.

Remove excess adhesive immediately with a natural sponge, frequently rinsed in clear, warm water, and dry with a soft, lint free cloth. After installation, the walls and wallcovering should be monitored for potential moisture or vapour infiltration, which must be promptly eliminated.

MAINTENANCE

Most wallcovering is easily cleaned using clear, warm water and mild soap with a natural sponge. A soft cloth or towel should only be used to tamp dry (do not rub). Stubborn stains can be removed with a laundry spot remover or rubbing alcohol. Do not use solvent-based cleaning agents, lacquer thinners, nail polish remover, pine oil, or cleaning agents containing bleach, which may cause discoloration over time.

Note: The above is intended only as a guideline. Wallcovering installations must conform to current hanging instructions included with each shipment. The installer has final responsibility for proper installation and evaluation of jobsite conditions.



GOODRICH SOLUTIONS
WALLCOVERING
236 | TOPAZ

**WITH
GOODRICH,**

Your habitat becomes

A gallery of
Your **self-expressions;**









A canvas for
Your **creativity;**

A space for
Your **soul;**

A showcase of
Your **taste for life;**

PREMIERWALL

Stay Connected - www.goodrichglobal.com | info@goodrichglobal.com

 /Goodrich.Global.Singapore  /goodrich_global  /GoodrichGlobal  /GoodrichChina
 /GoodrichGlobal  /goodrichglobal  /GoodrichHQ  /Goodrich_Global

SINGAPORE [HQ] | CHINA | HONG KONG(CHINA) | INDIA | INDONESIA | MALAYSIA | MYANMAR | PHILIPPINES | THAILAND | UNITED ARAB EMIRATES | VIETNAM

Copyright © 2021 Goodrich Global. All rights reserved.